

# Washington

NAEP proficiency level and percentile data as well as results from state assessments demonstrate the existence of substantial excellence gaps for Black, Hispanic, and Free and Reduced Lunch Eligible students. White students had higher average AP scores than Black and Hispanic students on AP tests and were more likely to make a “5” on an AP exam or take an AP exam.

According to NAEP proficiency data, the percentage of students at the advanced level increased for Black, white, and non-FARM students in both grades of Math and Reading Grade 4 and for FARM students in both grades of Math, while performance declined among Hispanic students in Math Grade 8 and among Black students in Reading Grade 8. The excellence gap increased in Math and in Reading Grade 4, as well as for Black students in Reading Grade 8.

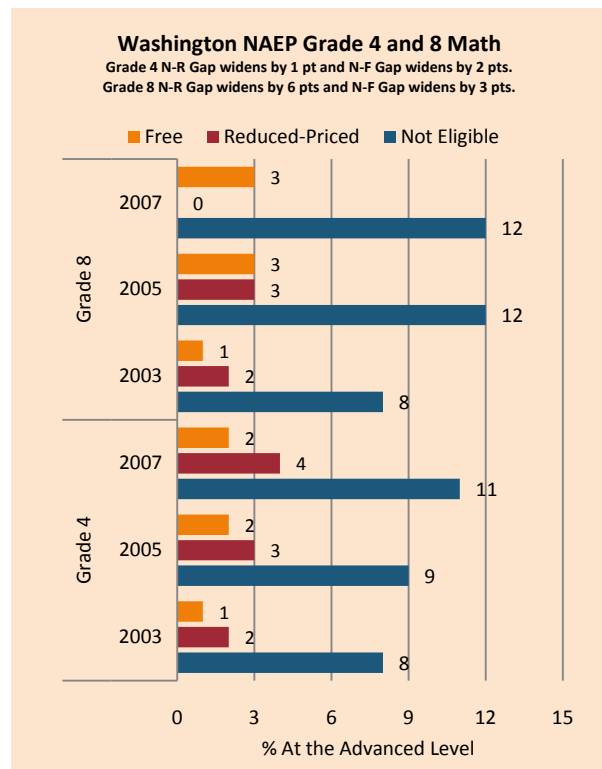
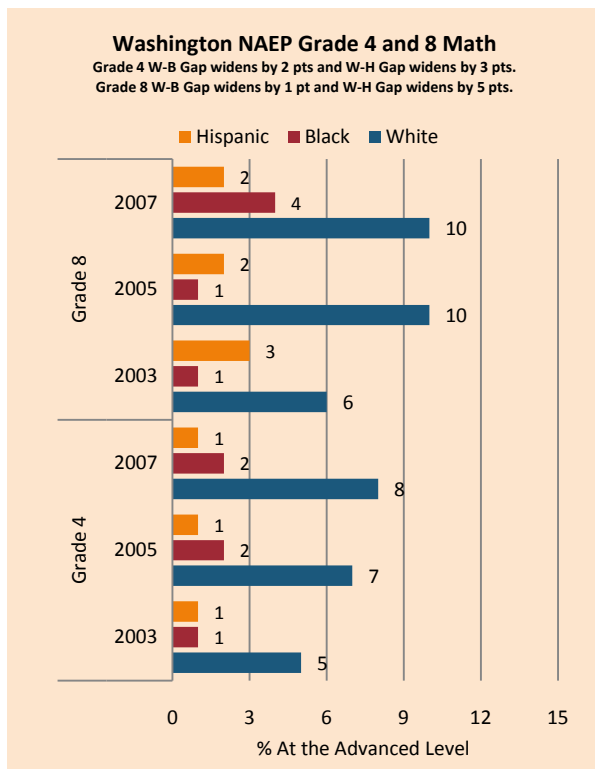
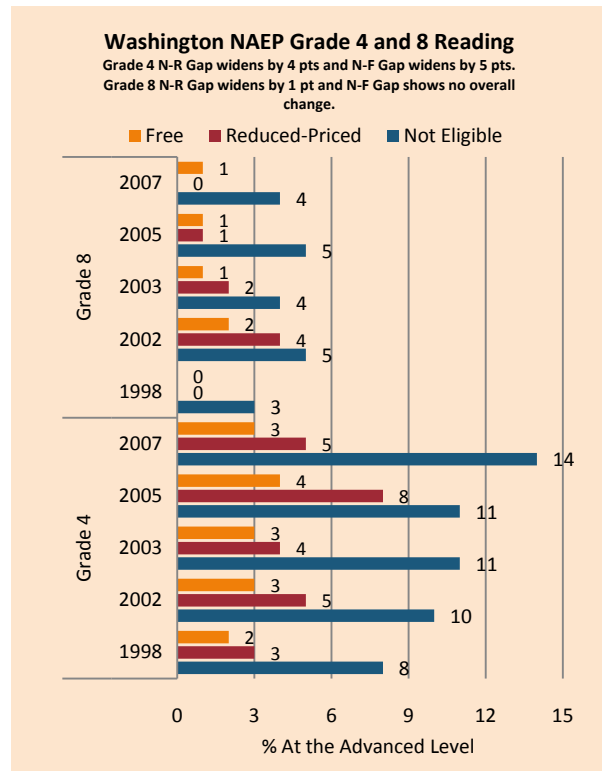
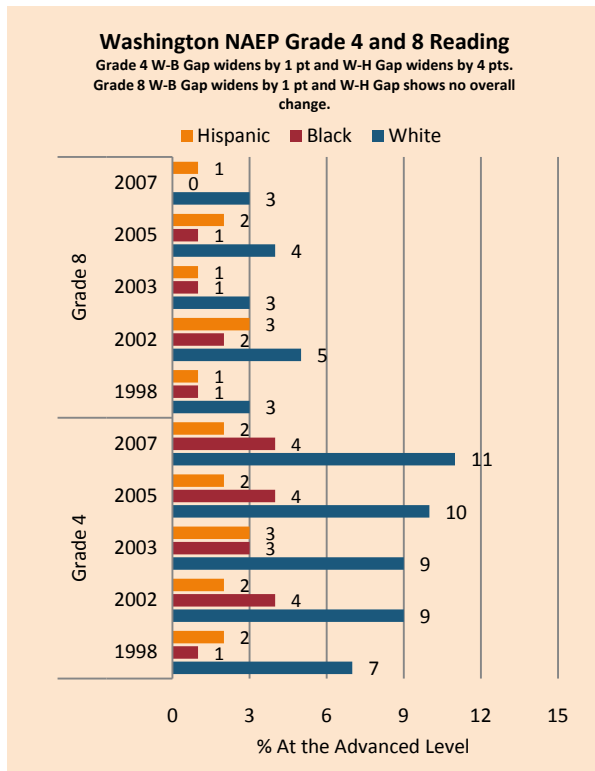
NAEP scale scores at the 90<sup>th</sup> percentile increased in Math for all but Hispanic students in Grade 8, with achievement gaps generally narrowing in Grade 4 and expanding in Grade 8. In Reading, there were gains among Hispanic students and for non-FARM and white students in Grade 4, stagnation for FARM students, and declines among Black students. Excellence gaps widened in Grade 4 and in Grade 8 for Black students.

The percentage of students performing at the advanced level on state assessments increased across ethnic subgroups in Grade 4 and 7, with Black students also improving in Grade 10 Reading. Achievement gaps grew in Grade 4 and 7, with declines in Grade 10 due in part to weaker performance by white students (although minority students posted substantial gains in Reading). The proportion of low-income students reaching advanced increased in Reading across grade levels and in Grade 7 Math, but more affluent students only posted gains in Grade 7, when the achievement gap increased. The excellence gap declined in Grade 10 Math and Reading and Grade 4 Math.

On the AP exams, there were increases in achievement gaps as measured by mean AP scores, the percentage of tests taken scoring a 5 (weighted), and the number of tests taken. There was also an increase in the gap between white and Hispanic students in the percentage of tests scoring a 5 (unweighted).

### Summary of State Policy as of 2006-2007

State	Mandate Identify	Mandate Services	Gifted Identified	Identified by Gender	Identified by Ethnicity	GT Funding	GT Funding per Identified
Washington	no	no	35,600	yes	yes	\$6,200,000	\$174.16



NAEP Scores at the 90 <sup>th</sup> Percentile				
Subject, Grade, Group	2003	2007	2003 Gap	2007 Gap
Math 4 Male	275	280	5	5
Math 4 Female	270	275		
Math 8 Male	327	334	4	5
Math 8 Female	323	329		
Reading 4 Male	258	265	10	4
Reading 4 Female	268	270		
Reading 8 Male	299	301	13	9
Reading 8 Female	312	310		
Math 4 ELL	245	250	28	28
Math 4 NonELL	274	278		
Math 8 ELL	288	287	38	45
Math 8 NonELL	326	332		
Reading 4 ELL	227	224	37	44
Reading 4 NonELL	264	268		
Reading 8 ELL	268	255	38	51
Reading 8 NonELL	307	306		
Math 4 FARM	259	263	20	20
Math 4 NonFARM	279	283		
Math 8 FARM	307	312	23	24
Math 8 NonFARM	330	337		
Reading 4 FARM	252	252	17	21
Reading 4 NonFARM	269	273		
Reading 8 FARM	293	292	18	18
Reading 8 NonFARM	310	310		
Math 4 White	277	281		
Math 4 Black	252	258	25	23
Math 4 Hispanic	259	265	18	16
Math 8 White	326	334		
Math 8 Black	305	312	21	21
Math 8 Hispanic	311	304	15	29
Reading 4 White	266	269		
Reading 4 Black	254	252	12	17
Reading 4 Hispanic	246	248	20	22
Reading 8 White	308	308		
Reading 8 Black	294	288	13	20
Reading 8 Hispanic	288	290	20	17

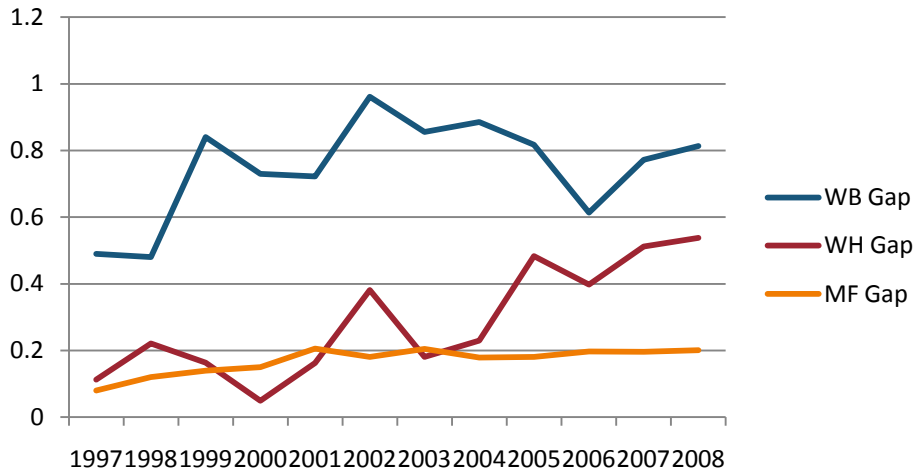
WA Assessment of Student Learning Grade 4, 7, 10 Reading Excellence Achievement Gaps on Race															
% At the Exceeds Standard Level	Grade 4					Grade 7					Grade 10				
	W	B	H	W-B	W-H	W	B	H	W-B	W-H	W	B	H	W-B	W-H
2001	24.8	9.7	7.6	15.1	17.2	19.5	5.9	4.9	13.6	14.6	53.0	24.8	23.8	28.2	29.2
2002	30.6	14.9	12.1	15.7	18.5	16.4	4.8	4.6	11.6	11.8	49.0	22.3	20.6	26.7	28.4
2003	27.9	12.8	9.1	15.1	18.8	22.0	8.0	6.9	14.0	15.1	47.2	21.3	20.6	25.9	26.6
2004	32.0	15.8	12.8	16.2	19.2	33.2	14.3	13.4	18.9	19.8	55.5	29.1	27.9	26.4	27.6
2005	41.1	20.9	17.5	20.2	23.6	43.7	21.3	19.3	22.4	24.4	48.9	23.2	23.4	25.7	25.5
2006	38.7	20.7	18.9	18.0	19.8	34.7	15.3	14.3	19.4	20.4	64.1	37.6	34.5	26.5	29.6
2007	32.8	16.9	14.7	15.9	18.1	39.8	21.4	20.9	18.4	18.9	56.2	29.9	32.2	26.3	24.0
2008	39.1	20.3	16.7	18.8	22.4	38.4	20.9	18.2	17.5	20.2	52.1	28.8	30.7	23.2	21.4

WA Assessment of Student Learning Grade 4, 7, 10 Mathematics Excellence Achievement Gaps on Race															
% At the Exceeds Standard Level	Grade 4					Grade 7					Grade 10				
	W	B	H	W-B	W-H	W	B	H	W-B	W-H	W	B	H	W-B	W-H
2001	23.6	5.6	6.9	18.0	16.7	15.2	2.3	3.1	12.9	12.1	21.6	4.2	5.3	17.4	16.3
2002	28.4	9.9	10.0	18.5	18.4	15.1	2.7	3.5	12.4	11.6	17.7	3.0	4.0	14.7	13.7
2003	30.8	12.8	10.8	18.0	20.0	22.1	5.4	5.6	16.7	16.5	21.3	4.3	5.4	17.0	15.9
2004	36.4	14.5	14.9	21.9	21.5	22.4	5.2	5.8	17.2	16.6	24.8	5.5	7.3	19.3	17.5
2005	38.7	14.4	14.1	24.3	24.6	27.6	7.4	8.6	20.2	19.0	20.1	4.1	6.2	16.0	13.9
2006	32.3	12.2	11.9	20.1	20.4	23.0	6.9	6.3	16.1	16.7	20.7	4.1	5.9	16.6	14.8
2007	38.0	14.0	14.6	24.0	23.4	28.3	8.8	9.3	19.5	19.0	21.2	4.0	6.0	17.2	15.2
2008	34.5	12.6	12.4	21.9	22.1	28.4	9.1	8.8	19.3	19.6	20.4	4.3	5.2	16.1	15.2

WA Assessment of Student Learning Grade 4, 7, 10 Reading Excellence Achievement Gaps on SES									
% At the Advanced Level	Grade 4			Grade 7			Grade 10		
	N	P	Gap	N	P	Gap	N	P	Gap
2004	35.5	16.3	19.2	37.2	15.4	21.8	57.3	31.7	25.6
2005	45.4	22.2	23.2	48.4	22.7	15.7	51.9	26.0	25.9
2006	42.7	22.1	20.6	38.6	16.5	22.1	66.0	39.4	26.6
2007	44.5	16.5	28.0	44.6	21.6	23.0	58.8	34.1	24.7
2008	32.6	19.7	12.9	42.4	20.7	21.7	54.4	32.5	21.9

WA Assessment of Student Learning Grade 4, 7, 10 Reading Excellence Achievement Gaps on SES									
% At the Advanced Level	Grade 4			Grade 7			Grade 10		
	N	P	Gap	N	P	Gap	N	P	Gap
2004	40.2	19.0	21.2	25.7	7.6	18.1	26.3	9.4	16.9
2005	43.7	18.3	25.4	31.7	11.0	20.7	22.3	7.1	15.2
2006	36.9	15.3	21.6	26.9	8.4	18.5	22.7	7.5	15.2
2007	43.4	17.5	25.9	32.7	10.9	21.8	23.0	7.6	15.4
2008	39.4	15.7	23.7	33.0	11.0	22.0	22.6	6.9	15.7

Gaps in Mean AP Scores

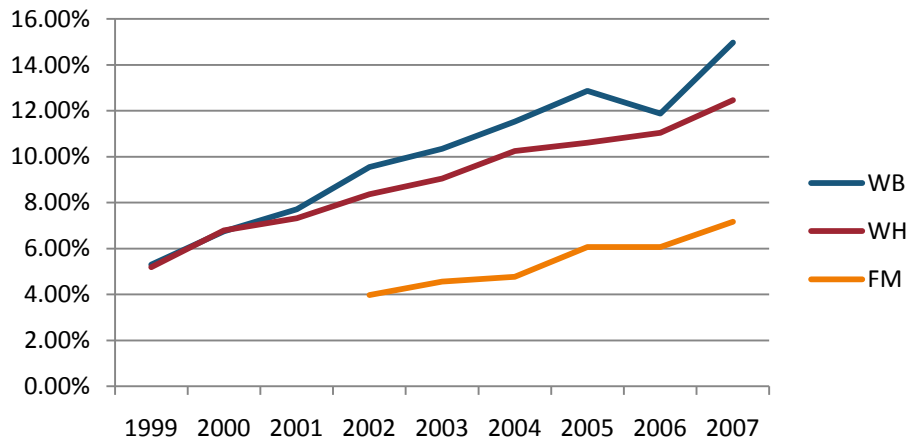


Gaps in the Percentage of Tests Taken Receiving a "5" on the AP Exam by Subgroup\*

	1997	1998	1999	2000	2001	2002	2003	2004	2005	2006	2007	2008
Male	13.41%	15.71%	16.84%	16.38%	15.25%	15.95%	16.02%	15.59%	14.94%	15.41%	15.23%	15.53%
Female	10.88%	11.52%	12.89%	12.21%	10.37%	11.44%	10.88%	11.47%	10.89%	10.78%	11.02%	11.42%
White	12.18%	13.57%	14.81%	14.31%	12.90%	13.92%	13.34%	13.52%	13.16%	13.05%	13.31%	13.55%
Black	2.94%	7.37%	3.32%	3.89%	3.25%	3.62%	2.60%	4.06%	3.28%	6.63%	5.07%	3.49%
Hispanic	14.29%	14.81%	16.27%	18.29%	14.43%	10.60%	16.60%	15.25%	8.10%	10.08%	7.69%	8.22%
M-F Gap	2.52%	4.19%	3.94%	4.17%	4.89%	4.52%	5.14%	4.12%	4.04%	4.63%	4.21%	4.10%
W-B Gap	9.24%	6.20%	11.49%	10.42%	9.65%	10.31%	10.74%	9.46%	9.87%	6.42%	8.24%	10.07%
W-H Gap	-2.10%	-1.24%	-1.47%	-3.98%	-1.53%	3.33%	-3.27%	-1.74%	5.06%	2.96%	5.63%	5.34%

Gaps in the Percentage of Tests Taken Receiving a "5" on the AP Exam by Subgroup Weighted by Enrollment*									
	1999	2000	2001	2002	2003	2004	2005	2006	2007
Male				2.40%	2.69%	2.92%	3.09%	3.59%	4.03%
Female				2.18%	2.32%	2.70%	2.91%	3.16%	3.71%
White	1.39%	1.61%	1.70%	2.19%	2.35%	2.65%	2.88%	3.11%	3.65%
Black	0.14%	0.18%	0.18%	0.22%	0.19%	0.33%	0.30%	0.79%	0.63%
Hispanic	0.68%	0.82%	0.84%	0.78%	1.42%	1.43%	0.92%	1.29%	1.15%
M-F Gap				0.22%	0.37%	0.22%	0.17%	0.42%	0.32%
W-B Gap	1.26%	1.44%	1.52%	1.96%	2.16%	2.33%	2.59%	2.32%	3.02%
W-H Gap	0.71%	0.79%	0.86%	1.41%	0.93%	1.22%	1.97%	1.82%	2.50%

**Gaps in the Number of Tests Taken Weighted by Subgroup Enrollment\***



\*The unit of analysis for AP data is the test, not the student. AP test results are presented as the number of scores received by members of each subgroup, NOT the number of students who received a given score on any exam. These numbers are not equivalent because some students take multiple tests.