

# Utah

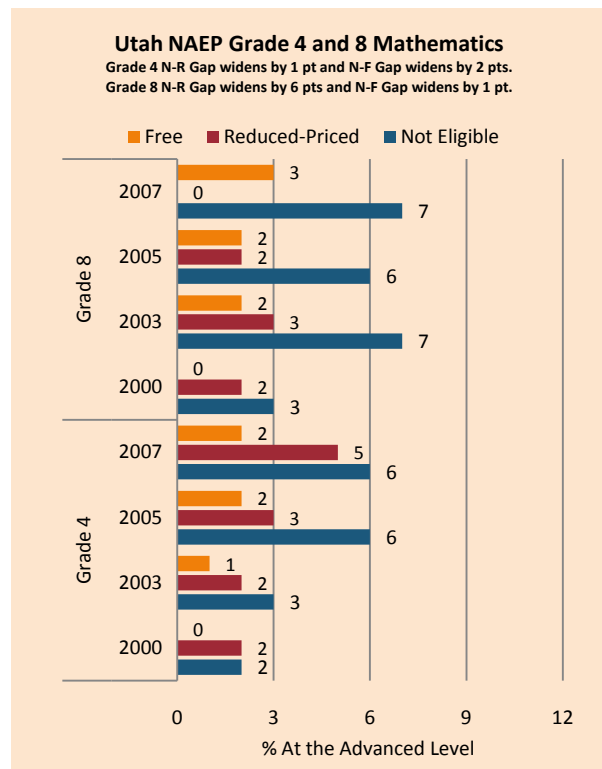
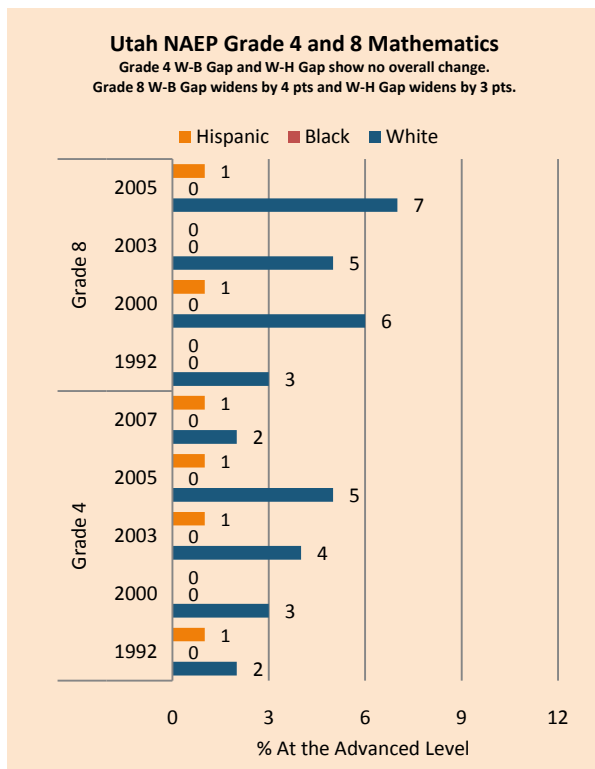
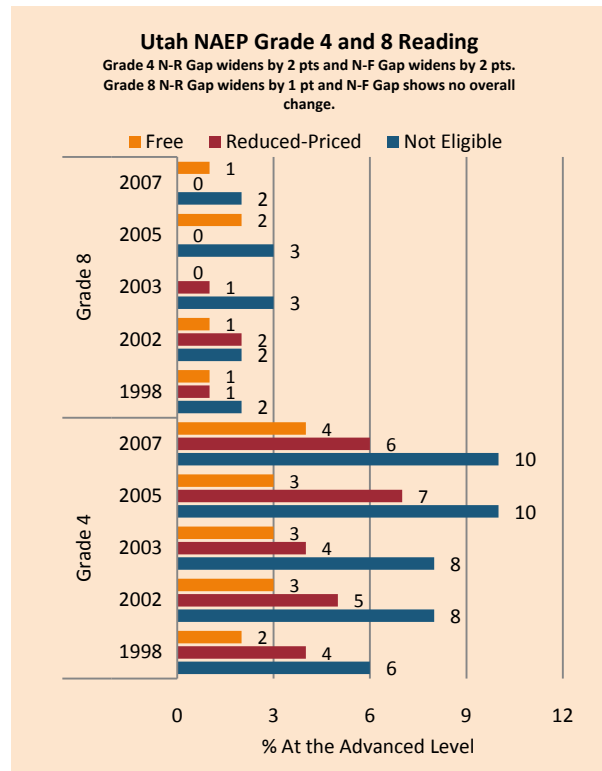
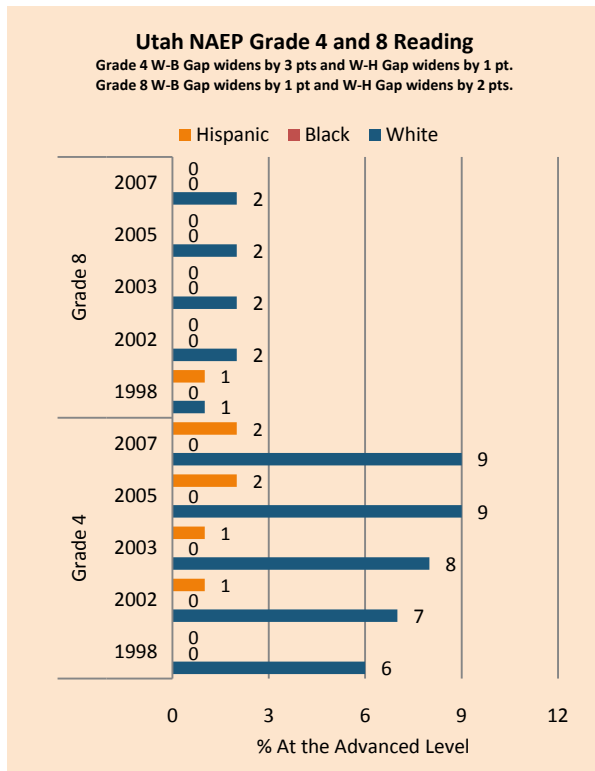
NAEP proficiency level and percentile data as well as results from state assessments demonstrate the existence of excellence gaps for Hispanic and Free and Reduced Lunch Eligible students. White students had higher average AP scores than Black and Hispanic students on AP tests and were more likely to make a “5” on an AP exam or take an AP exam.

According to NAEP proficiency data, the percentage of students at the advanced level increased for FARM students across assessments, for white and Hispanic students in Reading Grade 4 and both grades in Math, and for non-FARM students in both subjects of Grade 4. Achievement gaps widened in Math Grade 4 but narrowed for FARM student in both subjects of Grade 8.

NAEP scale scores at the 90<sup>th</sup> percentile increased for most subgroups in both grades of Math and Reading Grade 4, with achievement gaps narrowing for all but FARM students in Math Grade 4. Smaller excellence gaps in Reading Grade 8 were largely due to declines among non-FARM and white students.

On the AP exams, there were increases in achievement gaps in mean AP scores, the percentage of tests receiving a 5 (weighted), and the number of tests taken. At the same time, there was an increase in the gap between white and Black students, but a decrease in the gap between white and Hispanic students in the percentage of tests scoring a 5 (unweighted).

Summary of State Policy as of 2006-2007							
State	Mandate Identify	Mandate Services	Gifted Identified	Identified by Gender	Identified by Ethnicity	GT Funding	GT Funding per Identified
Utah	yes	yes	Not collected	no	no	\$13,968,167	N/A



NAEP Scores at the 90 <sup>th</sup> Percentile				
Subject, Grade, Group	2003	2007	2003 Gap	2007 Gap
Math 4 Male	269	275	4	4
Math 4 Female	265	270		
Math 8 Male	327	327	6	5
Math 8 Female	321	322		
Reading 4 Male	257	260	8	7
Reading 4 Female	266	267		
Reading 8 Male	297	298	11	7
Reading 8 Female	308	305		
Math 4 ELL	250	258	18	15
Math 4 NonELL	268	274		
Math 8 ELL	290	301	35	25
Math 8 NonELL	325	326		
Reading 4 ELL	235	245	28	20
Reading 4 NonELL	263	264		
Reading 8 ELL	283	279	21	24
Reading 8 NonELL	304	303		
Math 4 FARM	260	264	10	12
Math 4 NonFARM	269	276		
Math 8 FARM	311	314	17	14
Math 8 NonFARM	328	328		
Reading 4 FARM	251	254	15	13
Reading 4 NonFARM	265	267		
Reading 8 FARM	292	294	15	11
Reading 8 NonFARM	307	305		
Math 4 White	277	281		
Math 4 Black	255	261	22	20
Math 4 Hispanic	260	265	18	16
Math 8 White	326	327		
Math 8 Black				
Math 8 Hispanic	292	303	34	24
Reading 4 White	264	266		
Reading 4 Black				
Reading 4 Hispanic	239	244	24	22
Reading 8 White	305	303		
Reading 8 Black				
Reading 8 Hispanic	284	284	21	20

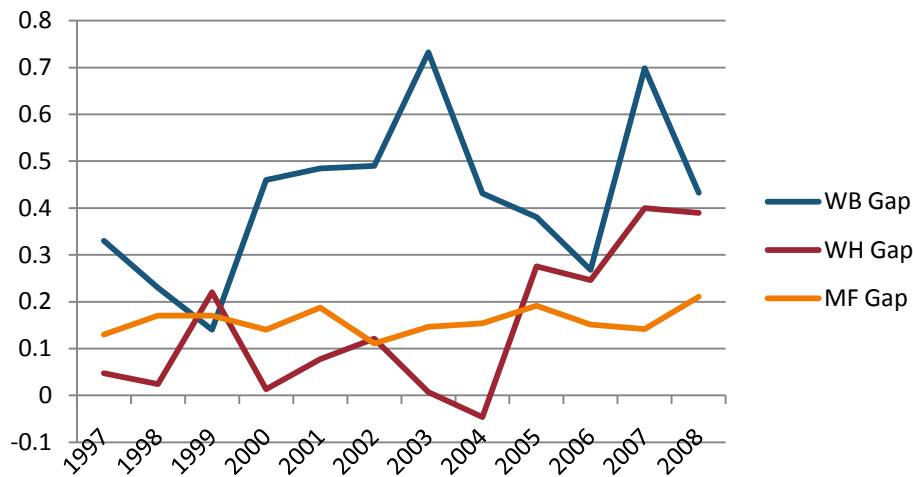
CRT Grades 4, 7, 11 Language Arts Excellence Achievement Gaps on Race															
% At Substantial Level	Grade 4					Grade 7					Grade 11				
	W	B	H	W-B	W-H	W	B	H	W-B	W-H	W	B	H	W-B	W-H
<b>2008</b>	52	27	21	<b>25</b>	<b>31</b>	59	31	24	<b>28</b>	<b>35</b>	58	28	25	<b>30</b>	<b>33</b>

CRT Grades 4, 7, 11 Mathematics Excellence Achievement Gaps on Race															
% At Substantial Level	Grade 4					Grade 7					Grade 11				
	W	B	H	W-B	W-H	W	B	H	W-B	W-H	W	B	H	W-B	W-H
<b>2008</b>	65	34	35	<b>31</b>	<b>30</b>	62	38	40	<b>24</b>	<b>22</b>	39	15	14	<b>24</b>	<b>25</b>

CRT Grades 4, 7, 11 Language Arts Excellence Achievement Gaps on SES									
% At Substantial Level	Grade 4			Grade 7			Grade 11		
	N	P	Gap	N	P	Gap	N	P	Gap
<b>2008</b>	55	31	<b>24</b>	61	34	<b>27</b>	58	34	<b>24</b>

CRT Grades 4, 7, 11 Mathematics Excellence Achievement Gaps on SES									
% At Substantial Level	Grade 4			Grade 7			Grade 11		
	N	P	Gap	N	P	Gap	N	P	Gap
<b>2008</b>	68	45	<b>23</b>	64	48	<b>16</b>	40	21	<b>21</b>

Gaps in Mean AP Scores



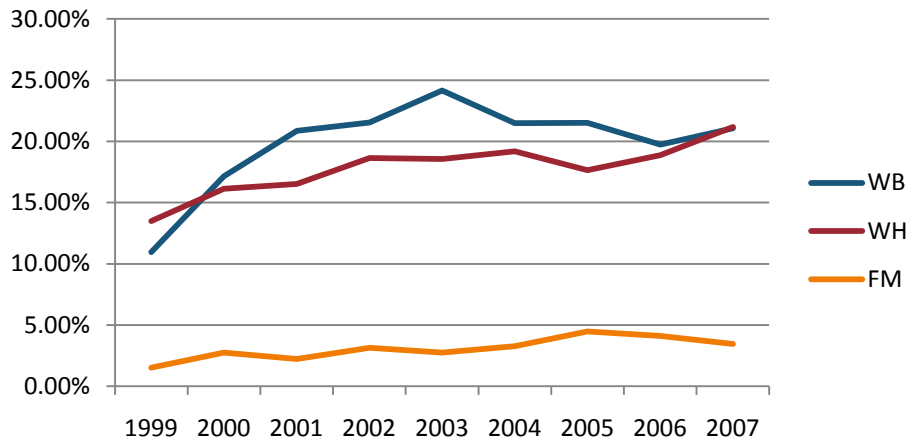
Gaps in the Percentage of Tests Taken Receiving a "5" on the AP Exam by Subgroup\*

	1997	1998	1999	2000	2001	2002	2003	2004	2005	2006	2007	2008
Male	14.95%	14.96%	15.59%	15.84%	14.02%	15.82%	15.07%	16.06%	15.15%	15.59%	15.92%	16.24%
Female	11.89%	9.90%	10.86%	11.37%	9.99%	12.95%	11.47%	11.75%	10.96%	11.25%	11.22%	11.00%
White	13.18%	12.41%	13.12%	13.45%	11.84%	14.29%	12.99%	13.57%	13.19%	13.39%	13.52%	13.55%
Black	10.34%	14.81%	12.28%	6.67%	5.71%	8.70%	2.17%	9.21%	8.24%	12.04%	10.19%	6.38%
Hispanic	17.62%	16.96%	11.46%	16.78%	15.16%	16.81%	18.34%	19.78%	11.17%	13.51%	9.47%	10.68%
M-F Gap	3.07%	5.07%	4.73%	4.47%	4.03%	2.88%	3.61%	4.31%	4.19%	4.35%	4.71%	5.24%
W-B Gap	2.84%	-2.40%	0.84%	6.78%	6.13%	5.59%	10.81%	4.36%	4.95%	1.35%	3.34%	7.16%
W-H Gap	-4.44%	-4.55%	1.66%	-3.33%	-3.32%	-2.52%	-5.35%	-6.21%	2.02%	-0.13%	4.05%	2.87%

Gaps in the Percentage of Tests Taken Receiving a "5" on the AP Exam by Subgroup Weighted by Enrollment\*

	1999	2000	2001	2002	2003	2004	2005	2006	2007
Male	3.92%	4.02%	3.77%	4.50%	4.54%	5.11%	4.78%	5.01%	4.91%
Female	2.90%	3.20%	2.91%	4.09%	3.77%	4.13%	3.95%	4.07%	3.85%
White	3.23%	3.57%	3.30%	4.31%	4.15%	4.57%	4.43%	4.51%	4.52%
Black	1.67%	0.63%	0.40%	0.75%	0.17%	1.12%	1.00%	1.68%	1.26%
Hispanic	1.27%	1.75%	1.72%	1.93%	2.45%	2.86%	1.78%	2.00%	1.16%
M-F Gap	1.02%	0.82%	0.86%	0.41%	0.77%	0.99%	0.83%	0.93%	1.06%
W-B Gap	1.55%	2.94%	2.90%	3.56%	3.98%	3.45%	3.44%	2.83%	3.26%
W-H Gap	1.95%	1.82%	1.58%	2.37%	1.70%	1.70%	2.65%	2.51%	3.36%

**Gaps in the Number of Tests Taken Weighted by Subgroup Enrollment\***



\*The unit of analysis for AP data is the test, not the student. AP test results are presented as the number of scores received by members of each subgroup, NOT the number of students who received a given score on any exam. These numbers are not equivalent because some students take multiple tests.