

Texas

NAEP proficiency level and percentile data as well as results from state assessments demonstrate the existence of substantial excellence gaps for Black, Hispanic, and Free and Reduced Lunch Eligible students. White students had higher average AP scores than Black and Hispanic students on AP tests and were more likely to make a “5” on an AP exam or take an AP exam.

According to NAEP proficiency data, the percentage of students at the advanced level increased in Math for all subgroups and in Reading for non-FARM students in both grades and white students in Grade 4, with a decline for Hispanic students in Grade 8. Achievement gaps generally increased except for the gap between white and Black students in Grade 8 Reading.

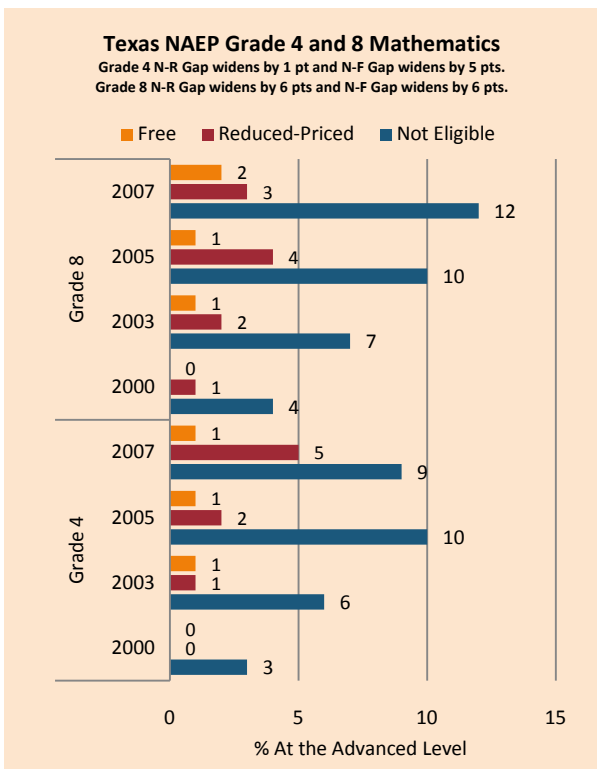
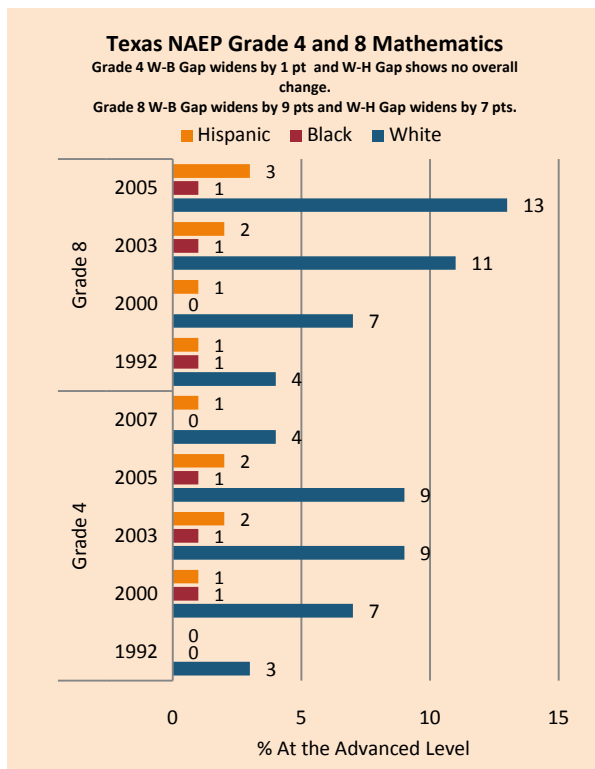
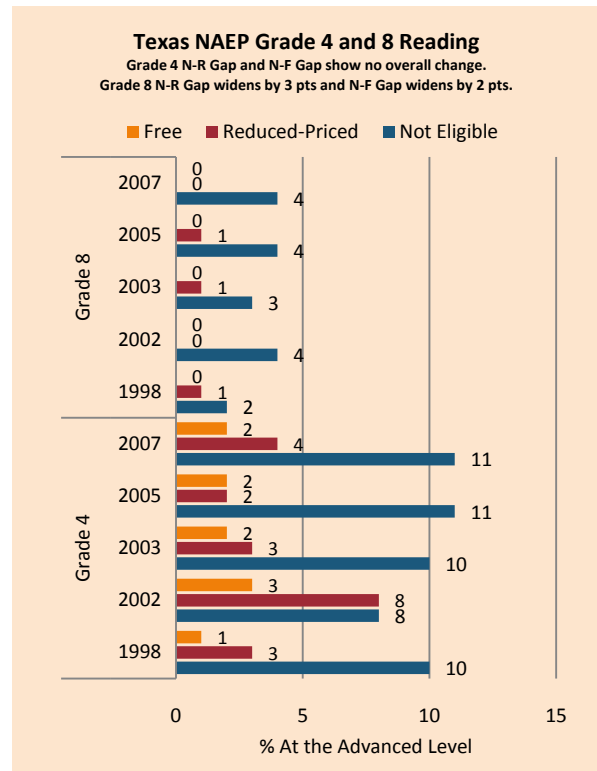
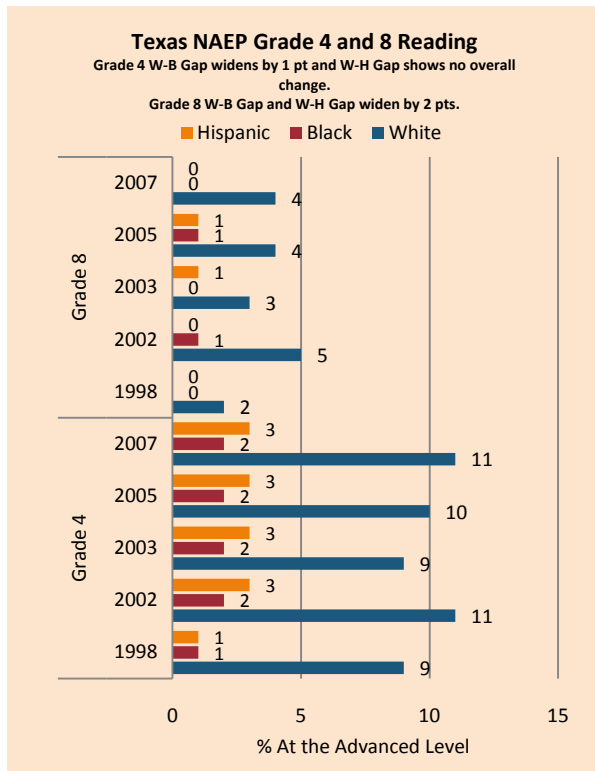
NAEP scale scores at the 90th percentile increased for most subgroups in Math, accompanied by declines in achievement gaps excepting the Hispanic students decline in performance in Grade 4. Although generally positive, improvement was slower in Reading with achievement gaps narrowing for Hispanic students in Grade 4 and FARM students in Grade 8 and expanding for Blacks in both grades and FARM students in Grade 8.

The percentage of students performing at the advanced level on state assessments increased across grade levels in both Reading and Math across ethnic and income subgroups. With the sole exception of Hispanic students in Grade 4 Reading, who kept pace with white students, the share of high-income and white students registering as top performers grew more quickly than did Black, Hispanic, or low-income students.

On the AP exams, there were increases in achievement gaps in mean AP scores, the percentage of tests scoring a 5 (weighted), and the number of tests taken. There was also a decrease in the gap between white and Hispanic students in the percentage of tests scoring a 5 (unweighted).

Summary of State Policy as of 2006-2007

State	Mandate Identify	Mandate Services	Gifted Identified	Identified by Gender	Identified by Ethnicity	GT Funding	GT Funding per Identified
Texas	yes	yes	343,158	yes	yes	\$77,191,366	\$224.94



NAEP Scores at the 90 th Percentile				
Subject, Grade, Group	2003	2007	2003 Gap	2007 Gap
Math 4 Male	272	275	4	2
Math 4 Female	267	273		
Math 8 Male	321	329	5	4
Math 8 Female	316	324		
Reading 4 Male	256	258	5	5
Reading 4 Female	261	263		
Reading 8 Male	295	296	10	10
Reading 8 Female	306	305		
Math 4 ELL	250	259	22	16
Math 4 NonELL	271	275		
Math 8 ELL	280	289	39	39
Math 8 NonELL	320	328		
Reading 4 ELL	231	237	30	25
Reading 4 NonELL	261	262		
Reading 8 ELL	257	255	44	48
Reading 8 NonELL	301	302		
Math 4 FARM	259	264	18	17
Math 4 NonFARM	277	281		
Math 8 FARM	302	311	25	24
Math 8 NonFARM	327	336		
Reading 4 FARM	247	247	20	22
Reading 4 NonFARM	267	270		
Reading 8 FARM	284	287	24	22
Reading 8 NonFARM	308	310		
Math 4 White	268	271		
Math 4 Black	242	248	26	23
Math 4 Hispanic	256	254	12	17
Math 8 White	328	336		
Math 8 Black	296	307	32	29
Math 8 Hispanic	304	314	24	22
Reading 4 White	267	269		
Reading 4 Black	246	247	21	22
Reading 4 Hispanic	248	251	19	19
Reading 8 White	309	311		
Reading 8 Black	287	286	22	25
Reading 8 Hispanic	287	289	23	22

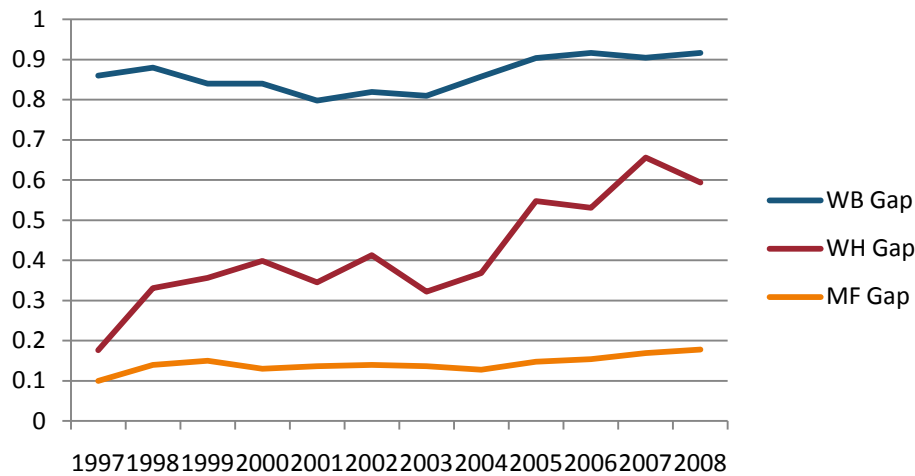
Texas Assessment of Knowledge and Skills Grade 4, 7, 10 English/Language Arts Excellence Achievement Gaps on Race															
% At the Advanced Level	Grade 4					Grade 7					Grade 10				
	W	B	H	W-B	W-H	W	B	H	W-B	W-H	W	B	H	W-B	W-H
2003	27	8	9	19	18	22	5	6	17	16	8	2	2	6	6
2004	36	14	16	22	20	29	8	11	21	18	6	1	1	5	5
2005	33	13	16	20	17	33	11	11	22	22	8	2	2	6	6
2006	30	11	13	19	17	32	11	13	21	19	19	6	7	13	12
2007	41	20	21	21	20	38	15	15	23	23	17	5	6	12	11
2008	36	15	17	21	19	43	20	21	23	22	25	9	11	16	14

Texas Assessment of Knowledge and Skills Grade 4, 7, 10 Mathematics Excellence Achievement Gaps on Race															
% At the Advanced Level	Grade 4					Grade 7					Grade 10				
	W	B	H	W-B	W-H	W	B	H	W-B	W-H	W	B	H	W-B	W-H
2003	24	7	9	17	15	11	2	3	9	8	11	2	3	9	8
2004	30	10	15	20	15	11	2	3	9	8	13	2	3	11	10
2005	39	14	21	25	18	18	4	6	14	12	14	3	4	11	10
2006	42	17	24	25	18	20	5	8	15	12	18	3	6	15	12
2007	45	19	26	26	19	25	8	11	17	14	22	4	8	18	14
2008	40	18	25	22	15	27	8	12	19	15	23	6	10	17	13

Texas Assessment of Knowledge and Skills Grade 4, 7, 10 English/Language Arts Excellence Achievement Gaps on SES									
% At the Advanced Level	Grade 4			Grade 7			Grade 10		
	N	P	Gap	N	P	Gap	N	P	Gap
2003	26	8	18	20	5	15	7	2	5
2004	36	14	22	28	10	18	5	1	4
2005	34	14	20	31	11	20	7	2	5
2006	30	11	19	31	12	19	17	6	11
2007	42	19	23	37	14	23	16	5	11
2008	37	15	22	42	18	24	24	9	15

Texas Assessment of Knowledge and Skills Grade 4, 7, 10 Mathematics Excellence Achievement Gaps on SES									
% At the Advanced Level	Grade 4			Grade 7			Grade 10		
	N	P	Gap	N	P	Gap	N	P	Gap
2003	24	8	16	11	2	9	10	2	8
2004	30	13	17	11	3	8	11	3	8
2005	40	19	21	18	5	13	13	4	9
2006	43	21	22	20	6	14	17	5	12
2007	46	24	22	25	10	15	20	7	13
2008	41	22	19	28	10	18	22	9	13

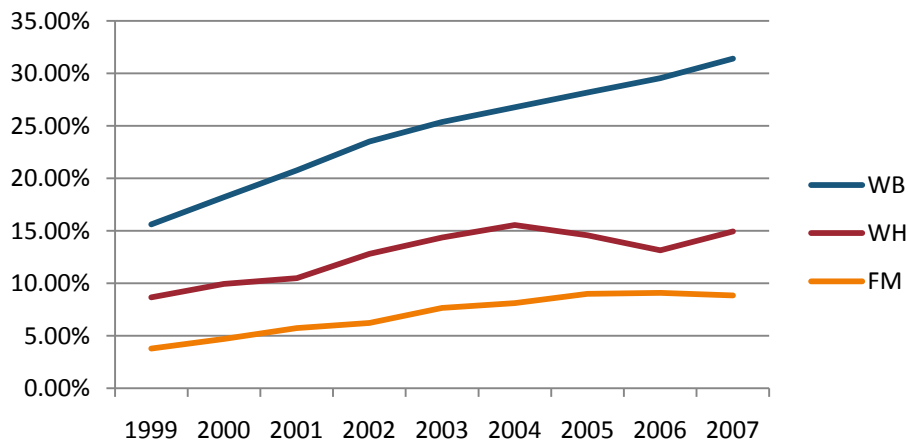
Gaps in Mean AP Scores



Gaps in the Percentage of Tests Taken Receiving a "5" on the AP Exam by Subgroup*												
	1997	1998	1999	2000	2001	2002	2003	2004	2005	2006	2007	2008
Male	14.53%	13.84%	13.55%	13.06%	11.95%	12.43%	12.28%	12.06%	10.73%	11.37%	10.96%	11.34%
Female	12.62%	11.01%	10.73%	14.34%	9.54%	9.87%	10.12%	9.78%	8.45%	8.61%	7.99%	8.34%
White	11.68%	10.80%	11.07%	10.68%	9.59%	10.45%	9.71%	10.08%	9.93%	10.12%	10.29%	10.48%
Black	2.85%	2.50%	1.92%	2.37%	2.20%	2.70%	2.14%	2.50%	2.01%	2.01%	2.24%	2.14%
Hispanic	18.56%	15.62%	13.34%	14.82%	12.67%	11.35%	13.91%	11.58%	7.35%	8.16%	6.14%	6.91%
M-F Gap	1.90%	2.83%	2.81%	-1.27%	2.41%	2.55%	2.16%	2.28%	2.28%	2.77%	2.96%	3.00%
W-B Gap	8.83%	8.29%	9.15%	8.31%	7.39%	7.75%	7.57%	7.59%	7.92%	8.12%	8.06%	8.34%
W-H Gap	-6.88%	-4.83%	-2.27%	-4.14%	-3.07%	-0.90%	-4.20%	-1.49%	2.59%	1.96%	4.15%	3.56%

Gaps in the Percentage of Tests Taken Receiving a "5" on the AP Exam by Subgroup Weighted by Enrollment*									
	1999	2000	2001	2002	2003	2004	2005	2006	2007
Male	2.39%	2.74%	2.87%	3.29%	3.54%	3.83%	3.72%	4.22%	4.39%
Female	2.30%	3.68%	2.84%	3.23%	3.69%	3.90%	3.69%	3.97%	3.91%
White	2.38%	2.79%	2.86%	3.50%	3.62%	4.11%	4.33%	4.55%	5.08%
Black	0.11%	0.19%	0.20%	0.27%	0.25%	0.35%	0.31%	0.31%	0.40%
Hispanic	1.71%	2.40%	2.44%	2.34%	3.19%	2.92%	2.13%	2.60%	2.12%
M-F Gap	0.09%	-0.94%	0.03%	0.06%	-0.15%	-0.07%	0.03%	0.24%	0.48%
W-B Gap	2.27%	2.61%	2.66%	3.23%	3.36%	3.76%	4.02%	4.24%	4.68%
W-H Gap	0.67%	0.39%	0.42%	1.15%	0.43%	1.19%	2.20%	1.96%	2.97%

Gaps in the Number of Tests Taken Weighted by Subgroup Enrollment*



*The unit of analysis for AP data is the test, not the student. AP test results are presented as the number of scores received by members of each subgroup, NOT the number of students who received a given score on any exam. These numbers are not equivalent because some students take multiple tests.