

# South Carolina

NAEP proficiency level and percentile data as well as results from state assessments demonstrate the existence of substantial excellence gaps for Black, Hispanic, and Free and Reduced Lunch Eligible students. White students had higher average AP scores than Black and Hispanic students on AP tests and were more likely to make a “5” on an AP exam or take an AP exam. South Carolina state assessments have fairly rigorous standards for advanced status.

According to NAEP proficiency data, the percentage of students at the advanced level increased in Math among non-FARM and white students as well as FARM students in Grade 8, with a decline among Hispanic students in Grade 4. Excellence Gaps increased in Math, while a decline among FARM students increased the achievement gap in Reading Grade 8.

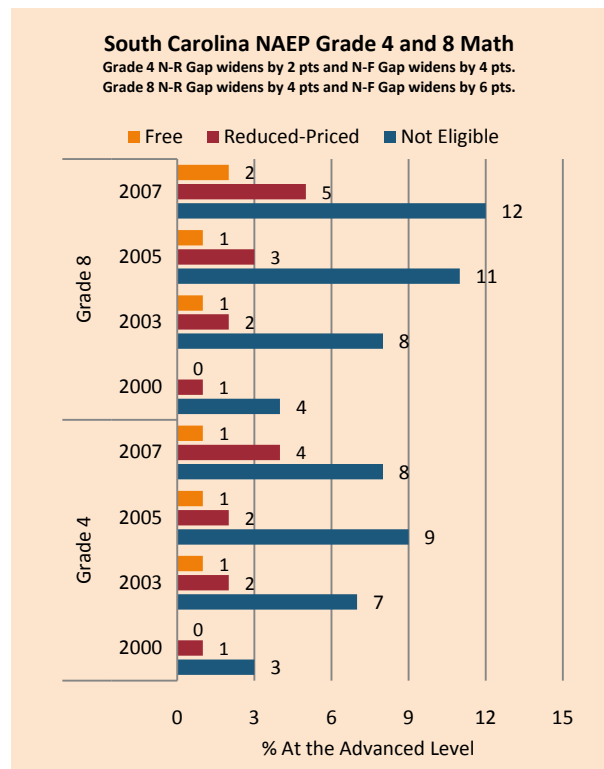
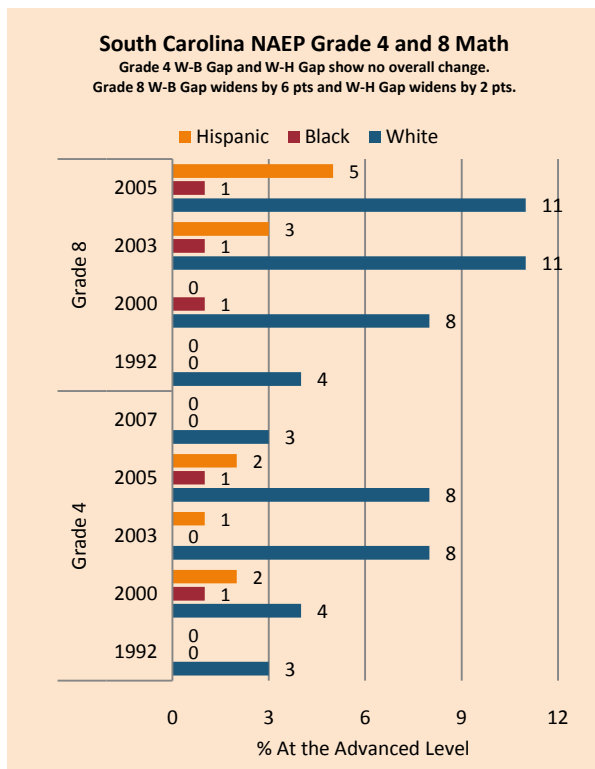
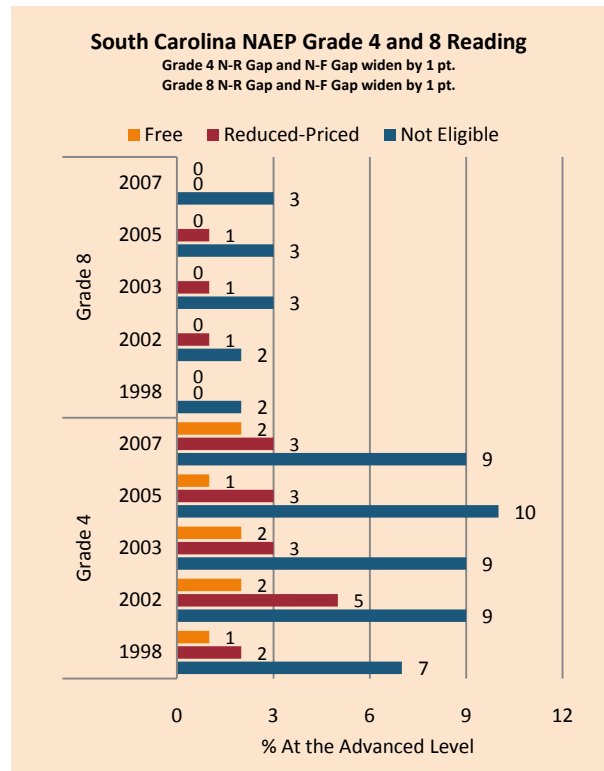
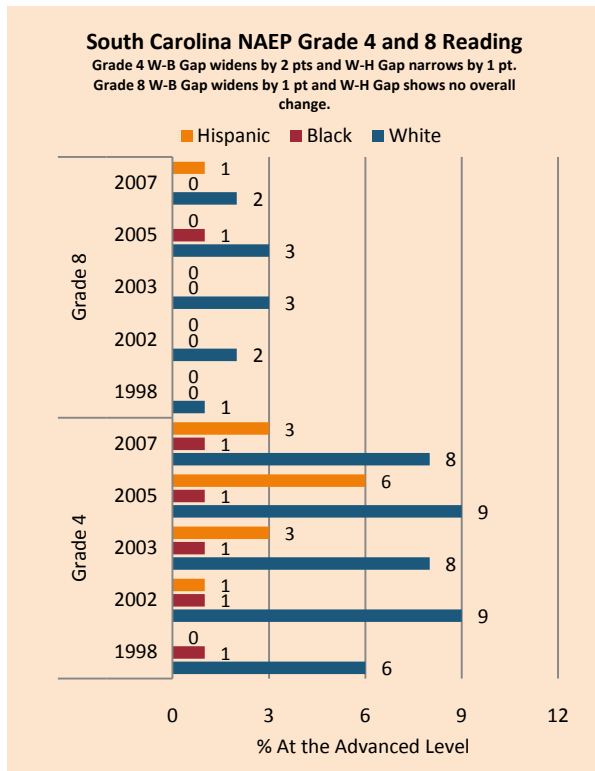
NAEP scale scores at the 90<sup>th</sup> percentile increased across subgroups in Math, with Black and Hispanic students generally narrowing achievement gaps due to strong gains. Scores in Reading were either flat or in decline as the excellence gap widened for FARM students.

The percentage of high-performing students on state Math assessments has increased across income and ethnic subgroups, with white and affluent students improving more rapidly than their peers in Grade 4 and 7. There has been much less improvement in Reading, but white and affluent students have shown a stronger upward trend than Black, Hispanic, and low-income students.

On the AP exam, the achievement gap increased as measured by the percentage of tests scoring a 5 and the number of tests taken, as well as for Hispanic students in mean AP scores and the percentage of 5’s (unweighted). There was a modest decrease in the gap between white and Black students, and a modest increase in the gap between white and Hispanic students in mean AP scores from 1997 to 2008.

**Summary of State Policy as of 2006-2007**

State	Mandate Identify	Mandate Services	Gifted Identified	Identified by Gender	Identified by Ethnicity	GT Funding	GT Funding per Identified
South Carolina	yes	no	Not collected	yes	yes	\$29,527,829	N/A



NAEP Scores at the 90 <sup>th</sup> Percentile				
Subject, Grade, Group	2003	2007	2003 Gap	2007 Gap
Math 4 Male	272	274	3	1
Math 4 Female	269	272		
Math 8 Male	324	328	8	1
Math 8 Female	316	327		
Reading 4 Male	254	256	8	4
Reading 4 Female	261	260		
Reading 8 Male	293	295	10	6
Reading 8 Female	303	301		
Math 4 ELL		267		6
Math 4 NonELL	271	273		
Math 8 ELL				
Math 8 NonELL	320	327		
Reading 4 ELL		250		9
Reading 4 NonELL	258	258		
Reading 8 ELL				
Reading 8 NonELL	299	298		
Math 4 FARM	258	259	19	21
Math 4 NonFARM	278	280		
Math 8 FARM	303	309	26	27
Math 8 NonFARM	329	336		
Reading 4 FARM	244	243	23	24
Reading 4 NonFARM	267	267		
Reading 8 FARM	286	283	20	22
Reading 8 NonFARM	306	305		
Math 4 White	272	273		
Math 4 Black	244	256	27	17
Math 4 Hispanic	242	255	30	19
Math 8 White	329	335		
Math 8 Black	295	306	33	29
Math 8 Hispanic		318		17
Reading 4 White	265	265		
Reading 4 Black	240	240	25	24
Reading 4 Hispanic	252	250	14	15
Reading 8 White	307	304		
Reading 8 Black	280	279	26	25
Reading 8 Hispanic		288		16

Palmetto Achievement Challenge Tests and High School Assessment Program Grade 4, 7, 11 English/Language Arts Excellence Achievement Gaps on Race															
% At the Advanced Level	Grade 4					Grade 7					Grade 11				
	W	B	H	W-B	W-H	W	B	H	W-B	W-H	W	B	H	W-B	W-H
2003	4	1	1	3	3	3	1	1	2	2	Data is not available.				
2004	4	1	2	3	2	5	1	1	4	4	Data is not available.				
2005	5	1	1	4	4	4	1	1	3	3	38	9	17	29	21
2006	7	2	3	5	4	5	1	1	4	4	32	10	14	22	18
2007	6	1	2	5	4	5	1	2	4	3	40	13	15	27	25
2008	7	1	2	6	5	7	1	3	6	4	36	10	17	26	19

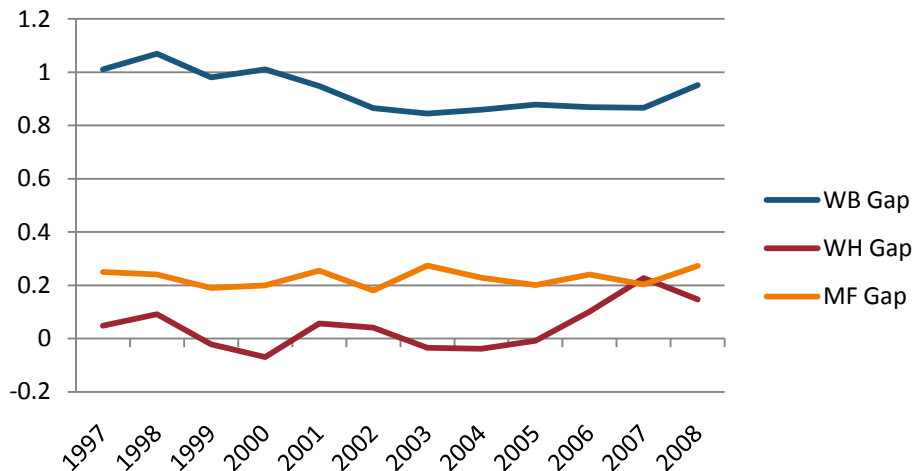
Palmetto Achievement Challenge Tests and High School Assessment Program Grade 4, 7, 11 Mathematics Excellence Achievement Gaps on Race															
% At the Advanced Level	Grade 4					Grade 7					Grade 11				
	W	B	H	W-B	W-H	W	B	H	W-B	W-H	W	B	H	W-B	W-H
2003	21	5	8	16	13	20	4	7	16	13	Data is not available.				
2004	21	5	7	16	14	22	4	8	18	14	Data is not available.				
2005	21	5	7	16	14	23	5	9	18	14	32	7	14	25	18
2006	27	6	9	21	18	22	4	8	18	14	31	8	14	23	17
2007	29	7	12	22	17	24	5	8	19	16	36	10	17	26	19
2008	30	7	13	23	17	25	5	9	20	16	34	9	17	25	17

Palmetto Achievement Challenge Tests and High School Assessment Program Grade 4, 7, 11 English/Language Arts Excellence Achievement Gaps on SES									
% At the Advanced Level	Grade 4			Grade 7			Grade 11		
	N	P	Gap	N	P	Gap	N	P	Gap
2003	4	1	3	4	0	4	Data is not available.		
2004	5	1	4	6	1	5	Data is not available.		
2005	5	1	4	5	1	4	38	11	27
2006	9	2	7	6	1	5	33	10	23
2007	8	1	7	6	1	5	40	13	27
2008	9	1	8	8	1	7	37	11	26

**Palmetto Achievement Challenge Tests and High School Assessment Program Grade 4, 7, 11  
Mathematics Excellence Achievement Gaps on SES**

% At the Advanced Level	Grade 4			Grade 7			Grade 11		
	N	P	Gap	N	P	Gap	N	P	Gap
<b>2003</b>	24	6	<b>18</b>	22	4	<b>18</b>	Data is not available.		
<b>2004</b>	24	7	<b>17</b>	23	5	<b>18</b>			
<b>2005</b>	24	6	<b>18</b>	25	6	<b>19</b>	32	9	<b>23</b>
<b>2006</b>	30	8	<b>22</b>	24	6	<b>18</b>	31	9	<b>22</b>
<b>2007</b>	32	9	<b>23</b>	26	6	<b>20</b>	36	12	<b>24</b>
<b>2008</b>	34	10	<b>24</b>	27	9	<b>18</b>	34	11	<b>23</b>

**Gaps in Mean AP Scores**

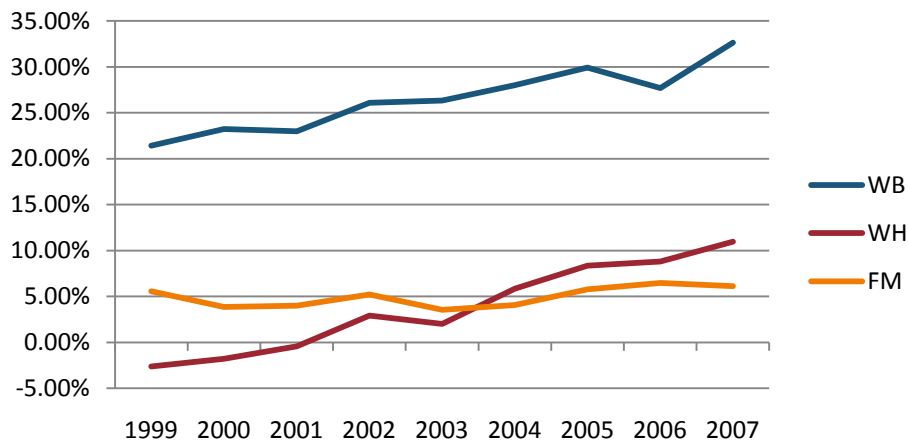


**Gaps in the Percentage of Tests Taken Receiving a "5" on the AP Exam by Subgroup\***

	1997	1998	1999	2000	2001	2002	2003	2004	2005	2006	2007	2008
Male	13.04%	13.22%	13.20%	14.23%	14.05%	15.09%	14.51%	14.97%	13.80%	14.16%	14.35%	15.73%
Female	7.66%	7.95%	9.35%	9.49%	9.24%	10.54%	8.46%	10.04%	9.79%	9.29%	9.45%	10.04%
White	11.28%	11.14%	11.87%	12.66%	12.40%	13.35%	11.81%	12.89%	12.24%	11.82%	12.36%	13.57%
Black	1.24%	1.70%	2.42%	1.95%	2.71%	3.20%	2.98%	2.35%	2.76%	2.96%	3.52%	3.21%
Hispanic	13.04%	11.49%	16.75%	18.41%	13.49%	15.46%	16.81%	18.25%	14.59%	12.94%	9.62%	10.32%
M-F Gap	5.38%	5.26%	3.85%	4.73%	4.81%	4.55%	6.05%	4.93%	4.01%	4.87%	4.89%	5.69%
W-B Gap	10.04%	9.44%	9.45%	10.70%	9.69%	10.14%	8.83%	10.55%	9.48%	8.85%	8.84%	10.36%
W-H Gap	-1.76%	-0.36%	-4.88%	-5.76%	-1.09%	-2.12%	-5.00%	-5.36%	-2.35%	-1.12%	2.75%	3.26%

Gaps in the Percentage of Tests Taken Receiving a "5" on the AP Exam by Subgroup Weighted by Enrollment*									
	1999	2000	2001	2002	2003	2004	2005	2006	2007
Male	2.53%	2.96%	3.01%	3.41%	3.47%	3.61%	3.50%	3.51%	3.97%
Female	2.32%	2.34%	2.35%	2.93%	2.32%	2.83%	3.05%	2.90%	3.20%
White	3.37%	3.84%	3.79%	4.44%	4.03%	4.55%	4.65%	4.23%	5.13%
Black	0.17%	0.14%	0.20%	0.23%	0.23%	0.17%	0.22%	0.24%	0.31%
Hispanic	5.20%	5.92%	4.18%	4.70%	5.40%	5.37%	4.32%	3.50%	2.93%
M-F Gap	0.22%	0.62%	0.66%	0.48%	1.15%	0.78%	0.45%	0.61%	0.78%
W-B Gap	3.20%	3.70%	3.58%	4.21%	3.80%	4.38%	4.43%	3.99%	4.82%
W-H Gap	-1.83%	-2.08%	-0.39%	-0.25%	-1.37%	-0.82%	0.33%	0.74%	2.20%

**Gaps in the Number of Tests Taken Weighted by Subgroup Enrollment\***



\*The unit of analysis for AP data is the test, not the student. AP test results are presented as the number of scores received by members of each subgroup, NOT the number of students who received a given score on any exam. These numbers are not equivalent because some students take multiple tests.