

# Michigan

NAEP proficiency level and percentile data as well as results from state assessments demonstrate the existence of substantial excellence gaps for Black, Hispanic, and Free and Reduced Lunch Eligible students. White students had higher average AP scores than Black and Hispanic students on AP tests and were more likely to make a “5” on an AP exam or take an AP exam. Michigan state assessments have a much lower threshold for achieving excellence than most other states or the NAEP.

According to NAEP proficiency data, the percentage of students at the advanced level increased for FARM and white students in Math Grade 8, for Black students in Reading Grade 4, Hispanic students in Grade 4 Math, and for non-FARM students in Math Grade 8 and Reading Grade 4. Excellence gaps rose in Math Grade 8, while they narrowed for Black students in both grades of Reading and Hispanic students in Math Grade 4.

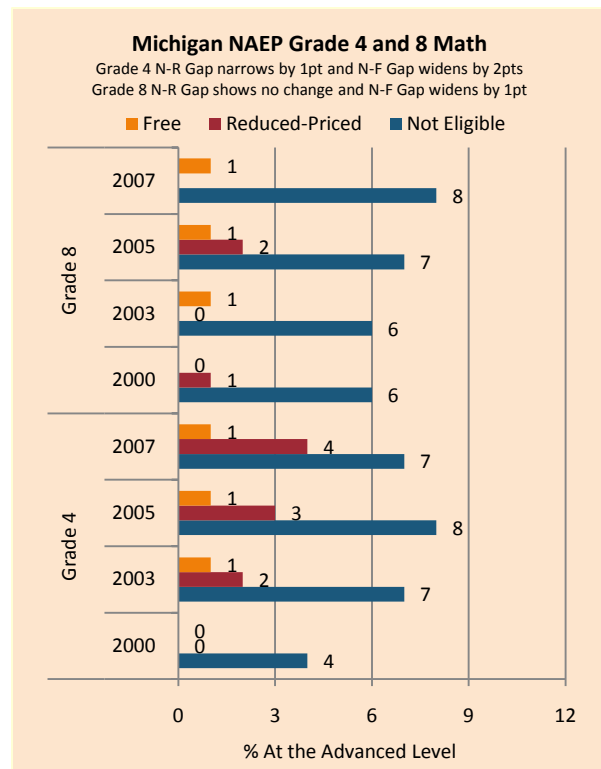
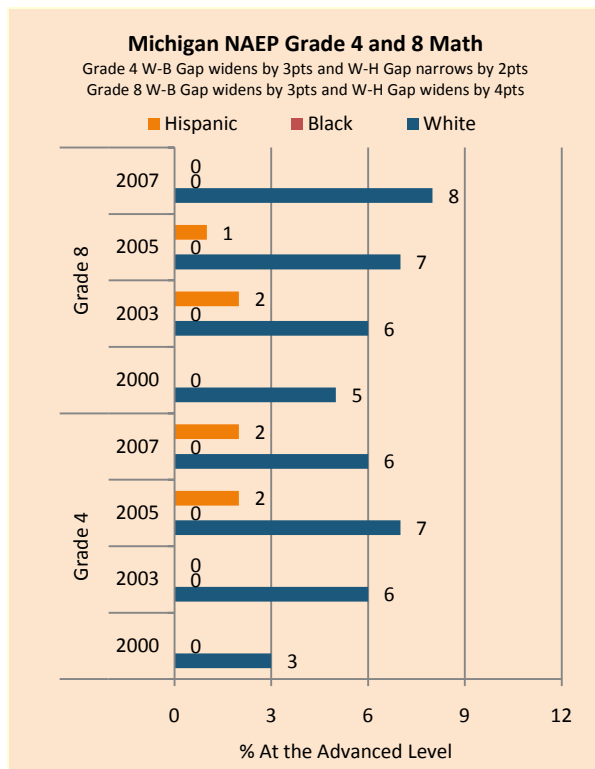
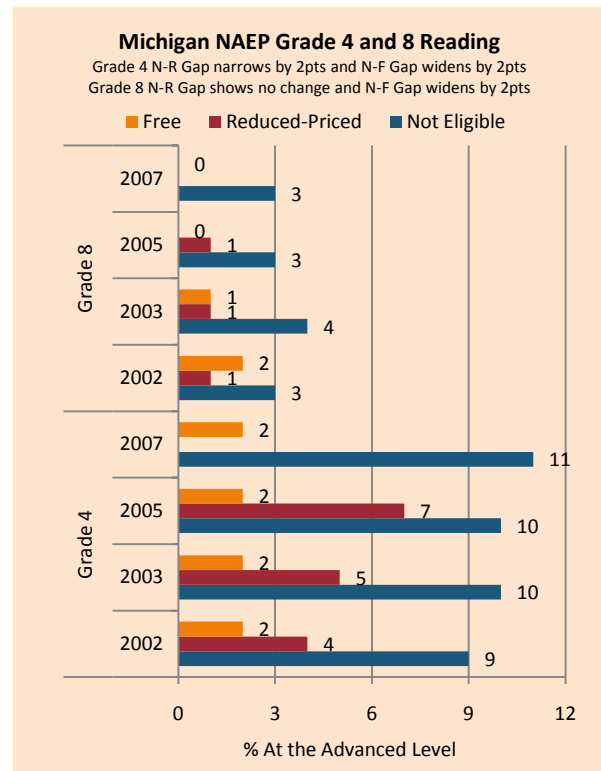
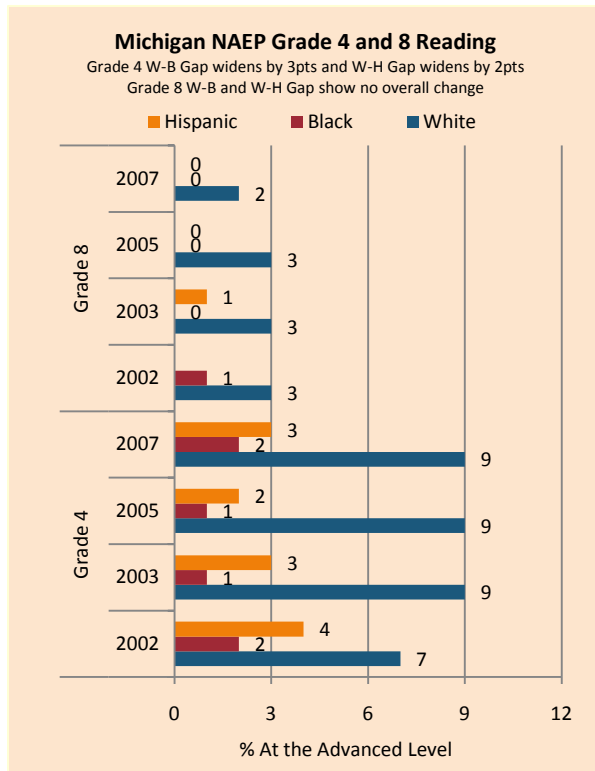
NAEP scale scores at the 90<sup>th</sup> percentile increased in Math Grade 4 across subgroups, with FARM, Black, and Hispanic students narrowing the achievement gap. The excellence gap expanded in Math Grade 8 in part because of declines among minority subgroups, it narrowed in Reading Grade 4 due to advances by Black and Hispanic students and stagnation among white students. There were broad declines in performance in Reading Grade 8, with African American and Hispanic students’ performances falling sharply.

An increasing percentage of white, Black, and Hispanic students, as well as both higher and lower income students, performed at the advanced level on Grade 4 and 7 Math and Reading assessments. White and affluent student representation increased more quickly than for poor or minority students.

On the AP exams, there were modest achievement gaps in mean scores, the percentage of exams scoring a 5 (weighted) and number of tests taken (weighted). There were increases in the gap between white and Black students, along with a decrease in the gap between white and Hispanic students, in the percentage of exams scoring a 5.

**Summary of State Policy as of 2006-2007**

State	Mandate Identify	Mandate Services	Gifted Identified	Identified by Gender	Identified by Ethnicity	GT Funding	GT Funding per Identified
Michigan	no	no	52,756	no	yes	\$285,000	\$5.40



NAEP Scores at the 90 <sup>th</sup> Percentile				
Subject, Grade, Group	2003	2007	2003 Gap	2007 Gap
Math 4 Male	274	275	5	4
Math 4 Female	269	271		
Math 8 Male	323	326	4	3
Math 8 Female	319	322		
Reading 4 Male	260	261	5	5
Reading 4 Female	265	266		
Reading 8 Male	300	296	8	10
Reading 8 Female	308	306		
Math 4 ELL	271	271	0	2
Math 4 NonELL	272	273		
Math 8 ELL				
Math 8 NonELL	321	324		
Reading 4 ELL	257	243	6	21
Reading 4 NonELL	263	264		
Reading 8 ELL				
Reading 8 NonELL	305	301		
Math 4 FARM	255	260	22	18
Math 4 NonFARM	277	278		
Math 8 FARM	304	305	21	24
Math 8 NonFARM	326	329		
Reading 4 FARM	246	247	22	22
Reading 4 NonFARM	268	269		
Reading 8 FARM	289	284	20	21
Reading 8 NonFARM	309	306		
Math 4 White	278	285		
Math 4 Black	253	265	25	20
Math 4 Hispanic	253	262	25	22
Math 8 White	325	328		
Math 8 Black	286	285	39	43
Math 8 Hispanic	305	301	20	27
Reading 4 White	267	267		
Reading 4 Black	234	240	33	27
Reading 4 Hispanic	249	253	18	14
Reading 8 White	308	304		
Reading 8 Black	284	275	24	29
Reading 8 Hispanic	299	286	9	19

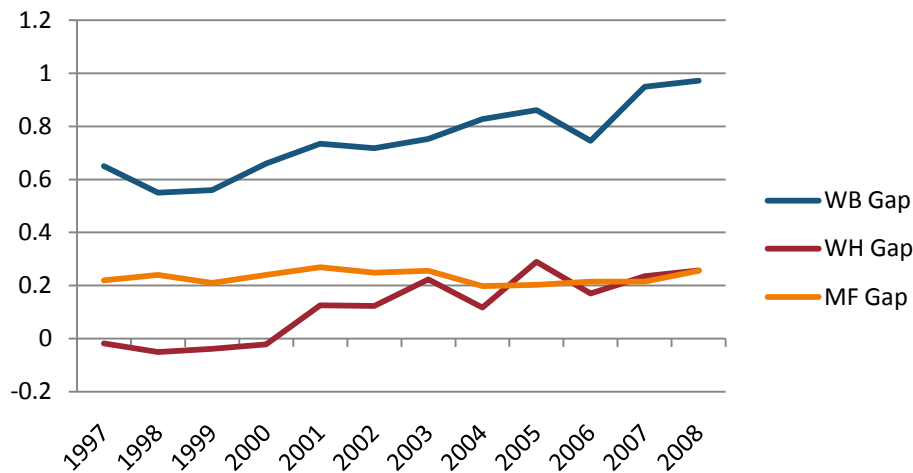
Michigan Educational Assessment Program and Michigan Merit Examination Grade 4, 7, 10 English/Language Arts Excellence Achievement Gaps on Race															
% At or Above Advanced Level	Grade 4					Grade 7					Grade 10				
	W	B	H	W-B	W-H	W	B	H	W-B	W-H	W	B	H	W-B	W-H
2006	26	11	11	15	15	29	10	14	19	15					
2007	38	17	18	21	20	30	10	13	20	17					
2008	38	13	18	25	20	35	10	16	25	19					

Michigan Educational Assessment Program and Michigan Merit Examination Grade 4, 7, 10 Mathematics Excellence Achievement Gaps on Race															
% At or Above Advanced Level	Grade 4					Grade 7					Grade 11				
	W	B	H	W-B	W-H	W	B	H	W-B	W-H	W	B	H	W-B	W-H
2005	33	15	15	18	18	43	13	19	30	24					
2006	40	15	19	25	21	41	11	18	30	23					
2007	48	18	26	30	22	47	16	25	31	22					
2008	51	21	28	30	23	61	25	37	36	24					

Michigan Educational Assessment Program and Michigan Merit Examination Grade 4, 7, 10 English/Language Arts Excellence Achievement Gaps on SES															
% At or Above Advanced Level	Grade 4					Grade 7					Grade 11				
	N	P	Gap			N	P	Gap			N	P	Gap		
2005	28	11	17			31	12	19							
2006	43	19	24			33	13	20							
2007	42	19	23			38	15	23							

Michigan Educational Assessment Program and Michigan Merit Examination Grade 4, 7, 10 Mathematics Excellence Achievement Gaps on SES															
% At or Above Advanced Level	Grade 4					Grade 7					Grade 11				
	N	P	Gap			N	P	Gap			N	P	Gap		
2005	36	16	20			44	19	25							
2006	44	20	24			44	17	27							
2007	52	26	26			51	23	28							

Gaps in Mean AP Scores



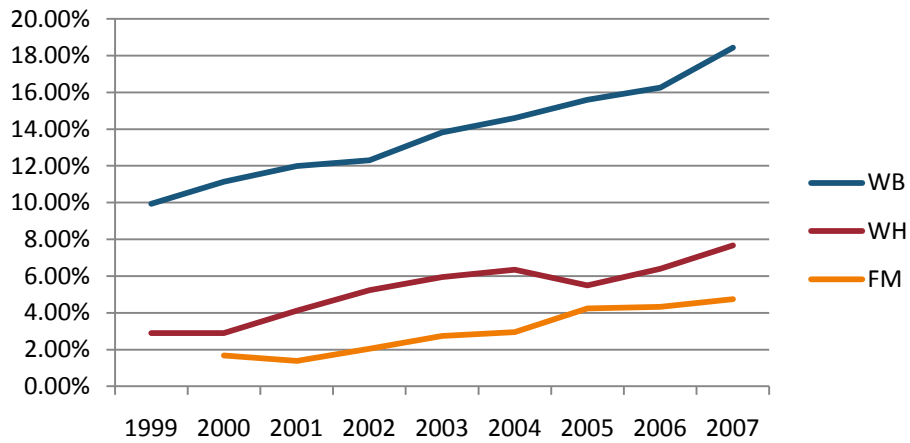
Gaps in the Percentage of Tests Taken Receiving a "5" on the AP Exam by Subgroup\*

	1997	1998	1999	2000	2001	2002	2003	2004	2005	2006	2007	2008
Male	15.13%	16.12%	16.43%	16.37%	16.79%	17.29%	17.00%	17.35%	17.11%	17.76%	18.14%	19.67%
Female	10.61%	9.85%	10.52%	10.29%	9.81%	10.76%	10.62%	12.08%	12.43%	12.71%	12.92%	13.29%
White	12.00%	11.87%	12.42%	12.56%	12.46%	13.16%	13.22%	14.12%	13.68%	14.02%	14.38%	15.29%
Black	3.71%	4.39%	3.15%	3.53%	2.97%	3.85%	4.14%	3.73%	4.36%	8.69%	3.65%	3.59%
Hispanic	15.36%	14.79%	15.09%	16.24%	15.37%	14.01%	12.84%	13.40%	11.23%	11.97%	12.49%	13.00%
M-F Gap	4.52%	6.27%	5.91%	6.07%	6.98%	6.53%	6.37%	5.27%	4.68%	5.05%	5.22%	6.37%
W-B Gap	8.29%	7.48%	9.27%	9.03%	9.49%	9.31%	9.07%	10.39%	9.32%	5.33%	10.73%	11.70%
W-H Gap	-3.36%	-2.92%	-2.66%	-3.69%	-2.91%	-0.85%	0.38%	0.72%	2.45%	2.04%	1.89%	2.29%

Gaps in the Percentage of Tests Taken Receiving a "5" on the AP Exam by Subgroup Weighted by Enrollment\*

	1999	2000	2001	2002	2003	2004	2005	2006	2007
Male		2.42%	2.75%	2.94%	2.92%	3.15%	3.24%	3.51%	3.88%
Female		1.69%	1.74%	2.05%	2.12%	2.55%	2.88%	3.06%	3.38%
White	1.62%	1.90%	2.05%	2.29%	2.45%	2.76%	2.84%	3.05%	3.47%
Black	0.10%	0.14%	0.13%	0.20%	0.20%	0.18%	0.23%	0.48%	0.21%
Hispanic	1.53%	1.99%	1.90%	1.71%	1.62%	1.77%	1.72%	1.84%	2.05%
M-F Gap		0.73%	1.01%	0.89%	0.81%	0.60%	0.36%	0.45%	0.50%
W-B Gap	1.52%	1.76%	1.92%	2.09%	2.26%	2.57%	2.62%	2.57%	3.26%
W-H Gap	0.09%	-0.09%	0.15%	0.59%	0.83%	0.99%	1.13%	1.21%	1.42%

**Gaps in the Number of Tests Taken Weighted by Subgroup Enrollment\***



\*The unit of analysis for AP data is the test, not the student. AP test results are presented as the number of scores received by members of each subgroup, NOT the number of students who received a given score on any exam. These numbers are not equivalent because some students take multiple tests.