

# Maine

NAEP proficiency level demonstrates the existence of excellence gaps for Black, Hispanic, and Free and Reduced Lunch Eligible students. White students had higher average AP scores than Black students on AP tests and were more likely to make a “5” on an AP exam or take an AP exam, while Hispanic students’ performances were more competitive.

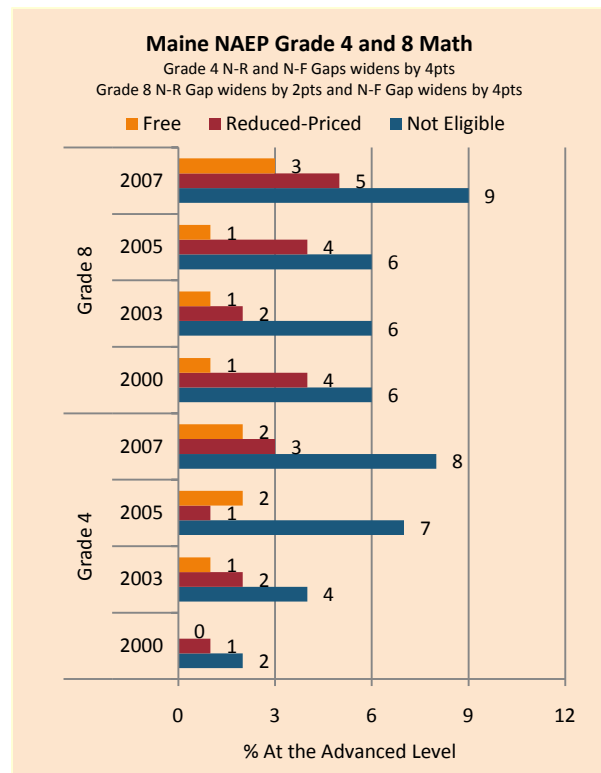
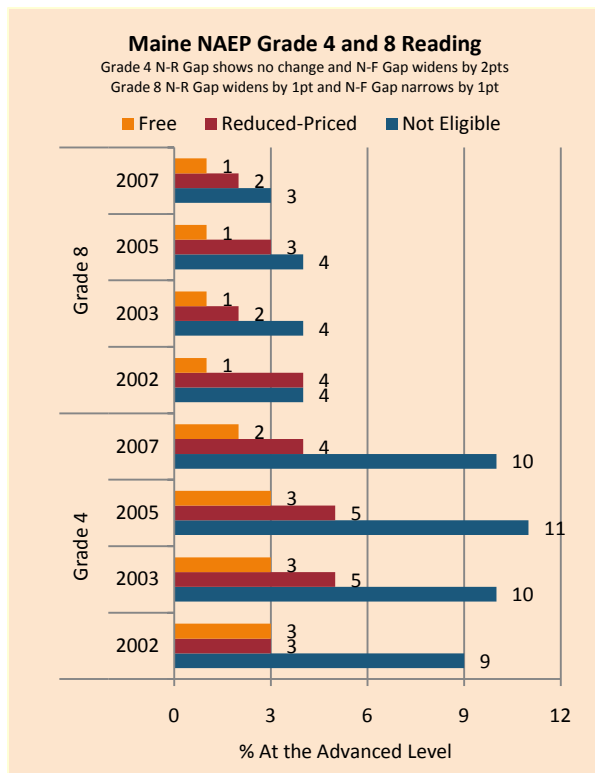
According to NAEP proficiency data, the percentage of students at the advanced level increased in Math among FARM, non-FARM, and white students, with non-FARM students improving more quickly than FARM students in Grade 4. A decline in Grade 4 Reading among FARM students led to an expansion of the achievement gap, but weakened performance among non-FARM students led to a decline in the excellence gap in Grade 8 Reading.

NAEP scale scores at the 90<sup>th</sup> percentile increased in Math in both grades across income subgroups as well as white students in Grade 8 and Black students in Grade 4. Reading scores were generally flat or lower than previous ones. The excellence gap narrowed for Black students in Grade 4 Math and for FARM students in Grade 8 in both subjects, while expanding for FARM students in Grade 4.

On the AP exams, there were modest increases in the gap between white and Black students in mean AP scores and the percentage of exams that scored a 5, but a decrease in the gap between white and Hispanic students by these two metrics. Both groups saw an increase in the achievement gap in the number of tests taken weighted by enrollment.

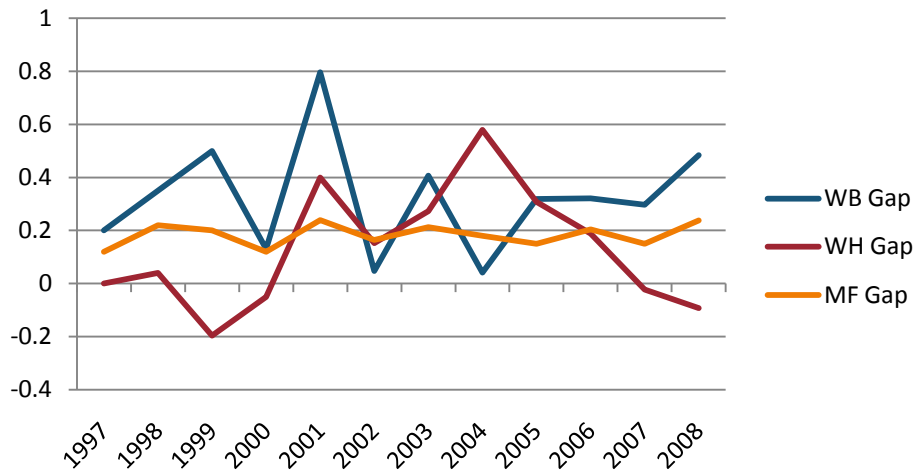
**Summary of State Policy as of 2006-2007**

State	Mandate Identify	Mandate Services	Gifted Identified	Identified by Gender	Identified by Ethnicity	GT Funding	GT Funding per Identified
Maine	yes	yes	7,285	NA	NA	\$4,335,553	\$595.13



NAEP Scores at the 90 <sup>th</sup> percentile				
Subject, Grade, Group	2003	2007	2003 Gap	2007 Gap
Math 4 Male	270	278	4	4
Math 4 Female	266	274		
Math 8 Male	323	328	3	1
Math 8 Female	319	327		
Reading 4 Male	262	261	4	4
Reading 4 Female	266	266		
Reading 8 Male	302	299	12	12
Reading 8 Female	314	312		
Math 4 ELL				
Math 4 NonELL	269	276		
Math 8 ELL				
Math 8 NonELL	321	328		
Reading 4 ELL				
Reading 4 NonELL	264	263		
Reading 8 ELL				
Reading 8 NonELL	309	306		
Math 4 FARM	260	264	12	16
Math 4 NonFARM	272	280		
Math 8 FARM	307	315	18	17
Math 8 NonFARM	325	331		
Reading 4 FARM	254	250	13	18
Reading 4 NonFARM	267	268		
Reading 8 FARM	298	299	13	10
Reading 8 NonFARM	311	309		
Math 4 White	271	271		
Math 4 Black	243	250	28	20
Math 4 Hispanic		270		
Math 8 White	321	328		
Math 8 Black				
Math 8 Hispanic				
Reading 4 White	264	263		
Reading 4 Black				
Reading 4 Hispanic				
Reading 8 White	309	306		
Reading 8 Black				
Reading 8 Hispanic				

Gaps in Mean AP Scores



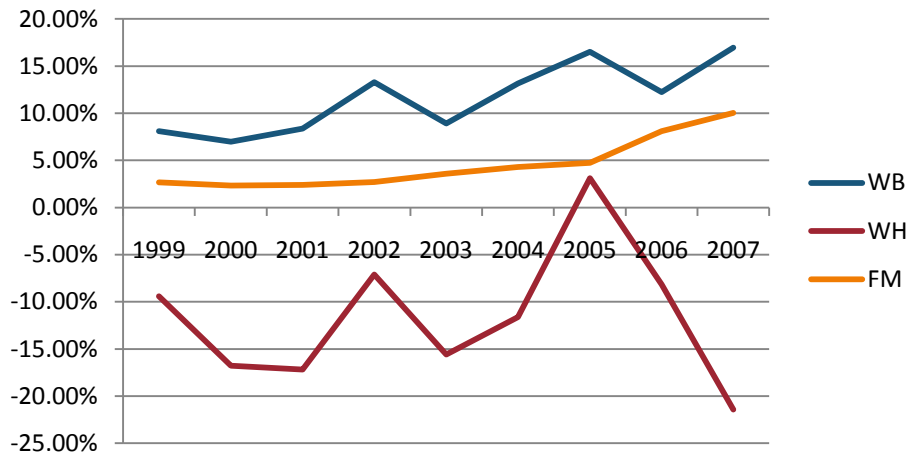
Gaps in the Percentage of Tests Taken Receiving a "5" on the AP Exam by Subgroup\*

	1997	1998	1999	2000	2001	2002	2003	2004	2005	2006	2007	2008
Male	14.28%	14.79%	16.98%	15.11%	15.14%	12.80%	13.92%	15.68%	14.70%	14.17%	13.94%	13.37%
Female	10.38%	9.18%	11.31%	11.89%	10.29%	10.12%	8.41%	10.30%	10.12%	9.91%	9.86%	8.43%
White	11.82%	11.60%	13.64%	13.47%	12.70%	11.16%	11.06%	12.93%	12.13%	11.77%	11.59%	10.25%
Black	10.00%	0.00%	0.00%	10.00%	0.00%	5.26%	4.44%	11.63%	9.09%	9.09%	7.69%	1.96%
Hispanic	20.00%	4.00%	20.00%	13.04%	7.02%	15.79%	10.53%	3.08%	6.25%	6.52%	12.50%	11.49%
M-F Gap	3.90%	5.61%	5.67%	3.22%	4.85%	2.68%	5.51%	5.38%	4.58%	4.25%	4.08%	4.94%
W-B Gap	1.82%	11.60%	13.64%	3.47%	12.70%	5.90%	6.61%	1.30%	3.04%	2.68%	3.89%	8.29%
W-H Gap	-8.18%	7.60%	-6.36%	0.42%	5.68%	-4.63%	0.53%	9.85%	5.88%	5.25%	-0.91%	-1.23%

Gaps in the Percentage of Tests Taken Receiving a "5" on the AP Exam by Subgroup Weighted by Enrollment\*

	1999	2000	2001	2002	2003	2004	2005	2006	2007
Male	2.58%	2.50%	2.78%	2.57%	2.97%	3.59%	3.67%	3.56%	4.01%
Female	2.02%	2.24%	2.13%	2.30%	2.09%	2.80%	3.01%	3.29%	3.82%
White	2.05%	2.27%	2.34%	2.26%	2.37%	3.04%	3.14%	3.19%	3.67%
Black	0.00%	0.99%	0.00%	0.36%	0.56%	1.21%	0.85%	1.35%	1.13%
Hispanic	4.88%	4.38%	2.50%	4.32%	3.90%	1.08%	1.42%	2.30%	6.64%
M-F Gap	0.56%	0.26%	0.65%	0.27%	0.87%	0.79%	0.66%	0.27%	0.18%
W-B Gap	2.05%	1.28%	2.34%	1.89%	1.81%	1.83%	2.29%	1.84%	2.54%
W-H Gap	-2.83%	-2.11%	-0.16%	-2.06%	-1.53%	1.96%	1.72%	0.89%	-2.97%

**Gaps in the Number of Tests Taken Weighted by Subgroup Enrollment\***



\*The unit of analysis for AP data is the test, not the student. AP test results are presented as the number of scores received by members of each subgroup, NOT the number of students who received a given score on any exam. These numbers are not equivalent because some students take multiple tests.