

# Illinois

NAEP proficiency level and percentile data as well as results from state assessments demonstrate the existence of substantial excellence gaps for Black, Hispanic, and Free and Reduced Lunch Eligible students. White students had higher average AP scores than Black and Hispanic students on AP tests and were more likely to make a “5” on an AP exam or take an AP exam.

According to NAEP proficiency data, the percentage of students at the advanced level increased in both grades in Math and declined in Reading Grade 8 for non-FARM, Hispanic, and white students, while FARM students improved in Math Grade 8 and Hispanic students in Reading Grade 4. The excellence gap expanded in Math for Black students in both grades and FARM students in Grade 4, declining for both groups in Reading Grade 8 as it did among Hispanic students in Reading Grades 4 and 8.

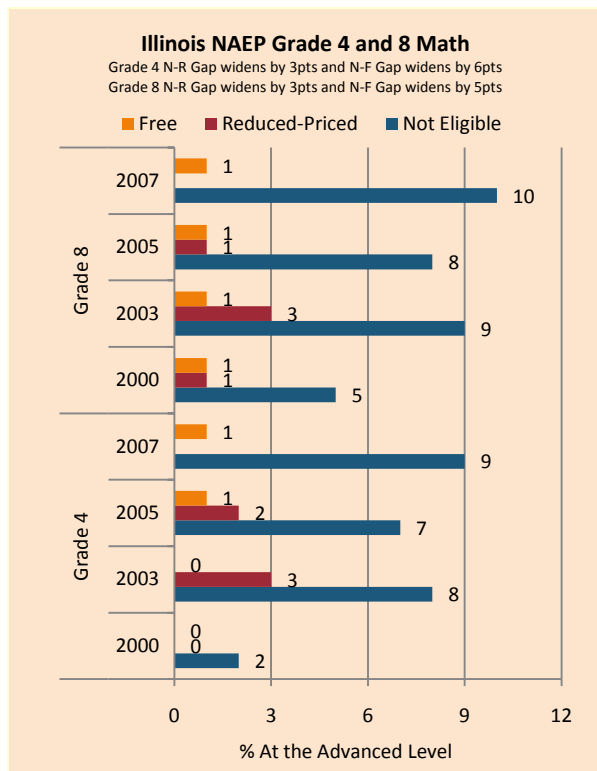
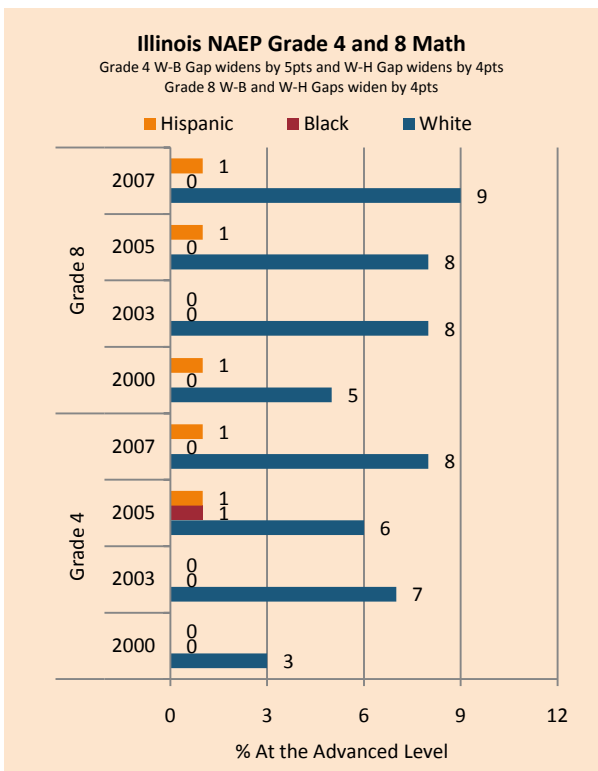
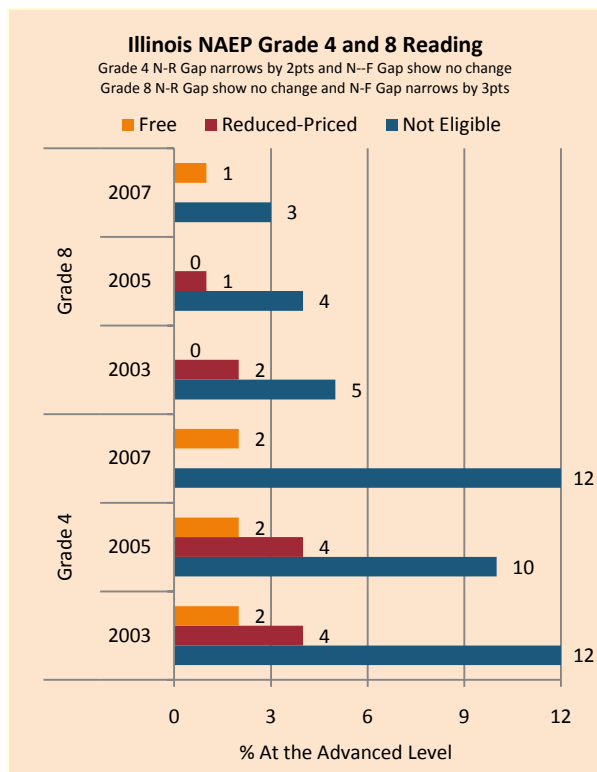
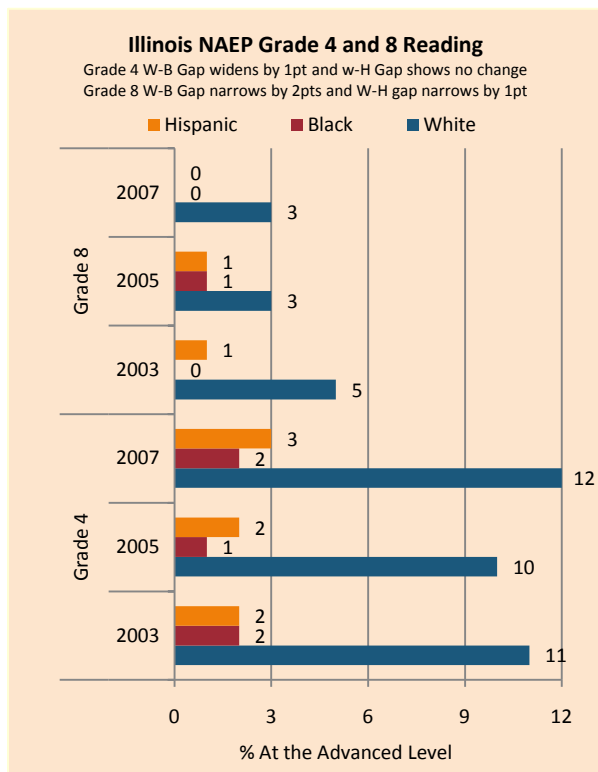
NAEP scale scores at the 90<sup>th</sup> percentile increased across subgroups in Math, with FARM students in both grades and Hispanic students in Grade 8 improving more quickly than their peers. The excellence gap shrank in Reading due in large measure to declines among white and non-FARM students; although, under-performing groups did post gains in Reading Grade 4 (Grade 8 saw universal declines).

The proportion of students scoring at the advanced level on state assessments rose across subgroups and subjects in Grade 3, in Grade 8 for all but FARM students on Math tests, while Grade 11 scores were relatively stable. The excellence gap declined for Black and Hispanic students in Grade 3 but increased in Grade 8 and 11. Achievement gaps for FARM students widened in Math and in Grade 3 Reading, while it narrowed in Grade 11.

On AP exams, there were modest increases in the gaps for both subgroups in mean scores, the percentage of tests scoring a 5 on the exam, and the number of tests taken weighted by enrollment. The gap between Black and white students also increased as measured by the percentage of tests that scored a 5 weighted by enrollment.

### Summary of State Policy as of 2006-2007

State	Mandate Identify	Mandate Services	Gifted Identified	Identified by Gender	Identified by Ethnicity	GT Funding	GT Funding per Identified
Illinois	no	no	not collected	no	no	\$0	N/A



NAEP Scores at the 90 <sup>th</sup> Percentile				
Subject, Grade, Group	2003	2007	2003 Gap	2007 Gap
Math 4 Male	274	278	4	8
Math 4 Female	270	270		
Math 8 Male	325	329	4	4
Math 8 Female	322	324		
Reading 4 Male	261	261	6	5
Reading 4 Female	267	267		
Reading 8 Male	304	299	7	8
Reading 8 Female	310	307		
Math 4 ELL	237	247	36	28
Math 4 NonELL	273	275		
Math 8 ELL	276	304	48	23
Math 8 NonELL	324	327		
Reading 4 ELL	223	222	41	43
Reading 4 NonELL	265	265		
Reading 8 ELL	273	264	35	40
Reading 8 NonELL	308	304		
Math 4 FARM	251	257	29	24
Math 4 NonFARM	279	281		
Math 8 FARM	299	304	32	29
Math 8 NonFARM	331	334		
Reading 4 FARM	244	247	27	24
Reading 4 NonFARM	271	271		
Reading 8 FARM	289	287	25	21
Reading 8 NonFARM	314	309		
Math 4 White	268	276		
Math 4 Black				
Math 4 Hispanic	251	258	18	18
Math 8 White	330	332		
Math 8 Black	291	293	39	39
Math 8 Hispanic	297	303	32	29
Reading 4 White	270	270		
Reading 4 Black	239	245	31	25
Reading 4 Hispanic	246	248	24	22
Reading 8 White	313	308		
Reading 8 Black	285	281	28	27
Reading 8 Hispanic	289	288	24	20

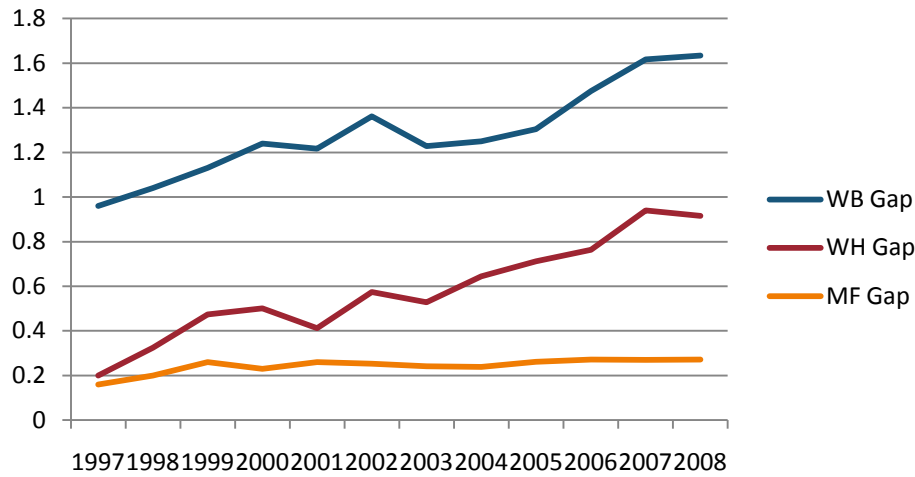
IL Standards Achievement Test Grade 3, 8, 11 Reading Excellence Achievement Gaps on Race															
% At the Advanced Level	Grade 3					Grade 8					Grade 11				
	W	B	H	W-B	W-H	W	B	H	W-B	W-H	W	B	H	W-B	W-H
2003	30.9	5.6	10	25.3	20.9	13.1	2.7	3.1	10.4	10	14.6	2.2	3	12.4	11.6
2004	30.7	6.8	12	23.9	18.7	13.1	2.6	3	10.5	10.1	12.7	1.8	2.8	10.9	9.9
2005	28.8	7	11.1	21.8	17.7	15.7	3.4	4	12.3	11.7	16.5	2.7	4.4	13.8	12.1
2006	31.1	8.3	11.5	22.8	19.6	12.4	1.9	3.6	10.5	8.8	17.8	2.7	4.2	15.1	13.6
2007	31.9	8.1	13.5	23.8	18.4	16	3.7	5.4	12.3	10.6	14.4	1.6	2.6	12.8	11.8

IL Standards Achievement Test Grade 3, 8, 10 Mathematics Excellence Achievement Gaps on Race															
% At the Advanced Level	Grade 3					Grade 8					Grade 11				
	W	B	H	W-B	W-H	W	B	H	W-B	W-H	W	B	H	W-B	W-H
2003	43.1	8.2	17.6	34.9	25.5	21	2.8	5.1	18.2	15.9	8.2	0.4	1.1	7.8	7.1
2004	43.9	9.3	21.6	34.6	22.3	22.9	3	6	19.9	16.9	12.8	0.9	2	11.9	10.8
2005	44.5	11	21.8	33.5	22.7	23.2	3.2	6.6	20	16.6	8.9	0.5	1.3	8.4	7.6
2006	48.7	15.8	26.1	32.9	22.6	34.1	7.1	12.9	27	21.2	9.8	0.6	2.1	9.2	7.7
2007	52.3	18.4	31	33.9	21.3	38.2	9.2	16.4	29	21.8	12.7	0.8	2	11.9	10.7

IL Standards Achievement Test Grade 3, 8, 11 Reading Excellence Achievement Gaps on SES									
% At the Advanced Level	Grade 3			Grade 8			Grade 11		
	N	P	Gap	N	P	Gap	N	P	Gap
2002	25.6	6.1	19.5	13.1	3.0	10.0	15.2	3.0	12.2
2003	30.6	7.6	23.0	13.0	2.7	10.3	13.9	2.6	11.3
2004	32.1	9.3	22.8	13.7	2.7	11.0	12.3	2.3	10.0
2005	30.4	9.0	21.4	16.5	3.5	13.0	16.3	3.3	13.0
2006	32.9	9.9	23.0	12.9	2.9	10.0	17.7	3.6	14.1
2007	33.8	10.8	23.0	16.9	4.4	12.5	14.0	2.6	11.4
2008	36.0	10.7	24.3	12.6	2.6	10.0	13.7	2.3	11.4

IL Standards Achievement Test Grade 3, 8, 11 Mathematics Excellence Achievement Gaps on SES									
% At the Advanced Level	Grade 3			Grade 8			Grade 11		
	N	P	Gap	N	P	Gap	N	P	Gap
2002	40.7	11.7	29.0	19.8	3.9	15.9	10.0	1.0	9.0
2003	42.6	12.5	30.1	20.8	4.2	16.6	8.1	0.9	7.2
2004	45.8	14.9	30.9	23.7	5.0	18.7	12.9	1.7	11.2
2005	46.7	16.3	30.4	24.5	5.1	19.4	9.2	0.9	8.3
2006	51.0	20.8	30.2	35.3	10.4	24.9	10.2	1.1	9.1
2007	54.6	24.6	30.0	39.8	13.0	26.8	13.0	1.6	11.4
2008	56.3	23.9	32.4	38.1	12.2	25.9	14.3	1.9	12.4

Gaps in Mean AP Scores



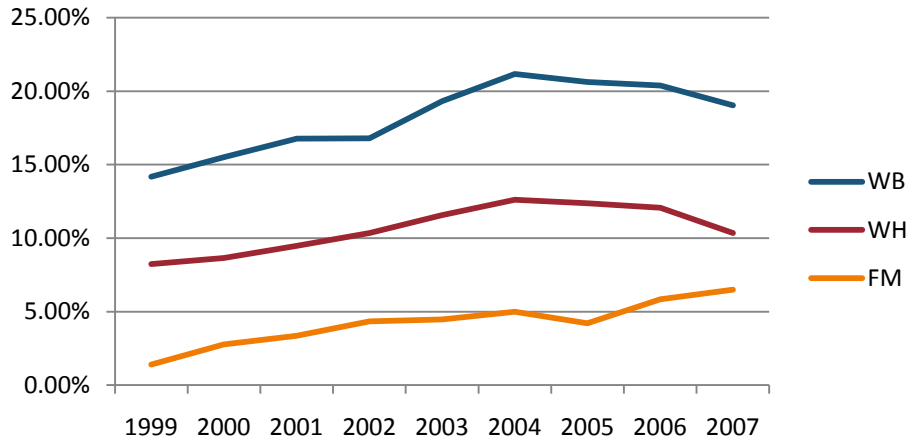
Gaps in the Percentage of Tests Taken Receiving a "5" on the AP Exam by Subgroup\*

	1997	1998	1999	2000	2001	2002	2003	2004	2005	2006	2007	2008
Male	19.06%	21.42%	22.68%	22.19%	21.52%	22.69%	22.35%	23.53%	22.71%	22.27%	22.75%	22.46%
Female	15.17%	14.78%	15.33%	15.76%	15.05%	16.52%	16.29%	17.85%	16.13%	16.11%	16.25%	15.98%
White	16.66%	18.10%	19.48%	19.52%	18.47%	20.39%	19.75%	21.37%	20.57%	20.44%	21.59%	21.37%
Black	4.31%	3.77%	4.41%	3.70%	4.14%	3.62%	3.97%	3.90%	3.96%	3.74%	2.90%	2.81%
Hispanic	22.22%	19.11%	18.15%	19.54%	19.13%	15.03%	18.78%	16.29%	12.57%	12.88%	10.35%	10.59%
M-F Gap	3.90%	6.64%	7.35%	6.43%	6.47%	6.17%	6.07%	5.68%	6.58%	6.16%	6.49%	6.48%
W-B Gap	12.34%	14.33%	15.07%	15.82%	14.33%	16.77%	15.78%	17.47%	16.61%	16.70%	18.69%	18.56%
W-H Gap	-5.57%	-1.02%	1.33%	-0.03%	-0.65%	5.36%	0.97%	5.08%	7.99%	7.56%	11.24%	10.78%

Gaps in the Percentage of Tests Taken Receiving a "5" on the AP Exam by Subgroup Weighted by Enrollment\*

	1999	2000	2001	2002	2003	2004	2005	2006	2007
Male	3.93%	4.23%	4.37%	4.89%	5.18%	5.65%	6.08%	6.32%	6.93%
Female	2.87%	3.44%	3.56%	4.27%	4.50%	5.18%	5.00%	5.52%	6.01%
White	3.47%	4.05%	4.14%	4.94%	5.24%	5.95%	6.09%	6.46%	7.23%
Black	0.16%	0.19%	0.23%	0.27%	0.29%	0.26%	0.36%	0.42%	0.42%
Hispanic	1.74%	2.37%	2.47%	2.08%	2.81%	2.48%	2.17%	2.52%	2.39%
M-F Gap	1.06%	0.79%	0.81%	0.61%	0.68%	0.47%	1.08%	0.81%	0.92%
W-B Gap	3.31%	3.86%	3.90%	4.67%	4.95%	5.69%	5.74%	6.04%	6.81%
W-H Gap	1.73%	1.68%	1.67%	2.85%	2.43%	3.47%	3.92%	3.95%	4.83%

**Gaps in the Number of Tests Taken Weighted by Subgroup Enrollment\***



\*The unit of analysis for AP data is the test, not the student. AP test results are presented as the number of scores received by members of each subgroup, NOT the number of students who received a given score on any exam. These numbers are not equivalent because some students take multiple tests.