

# Hawaii

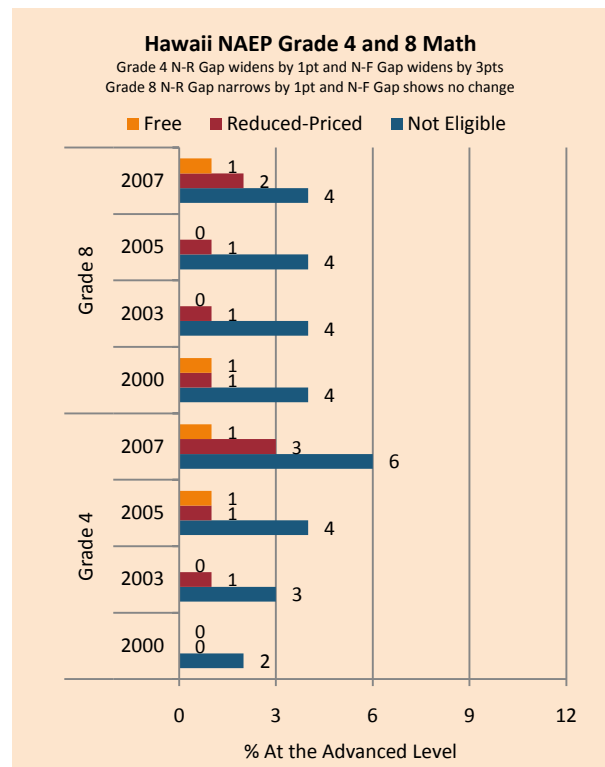
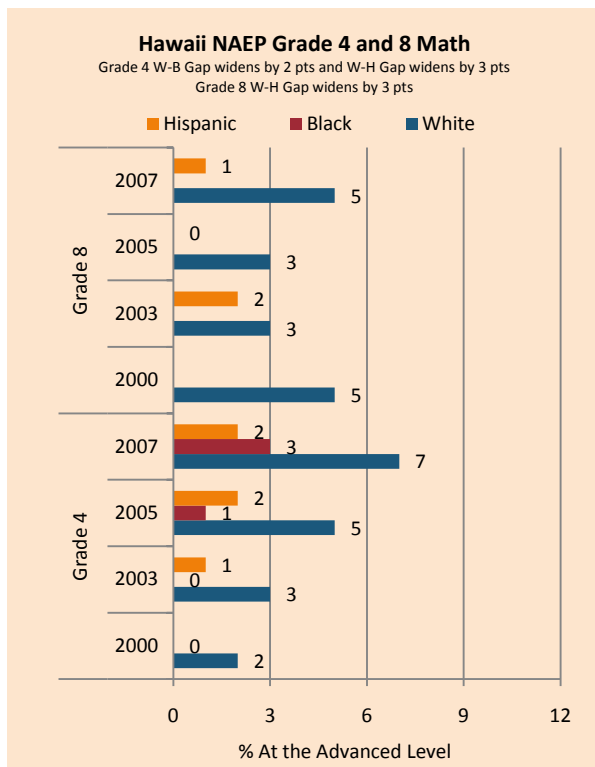
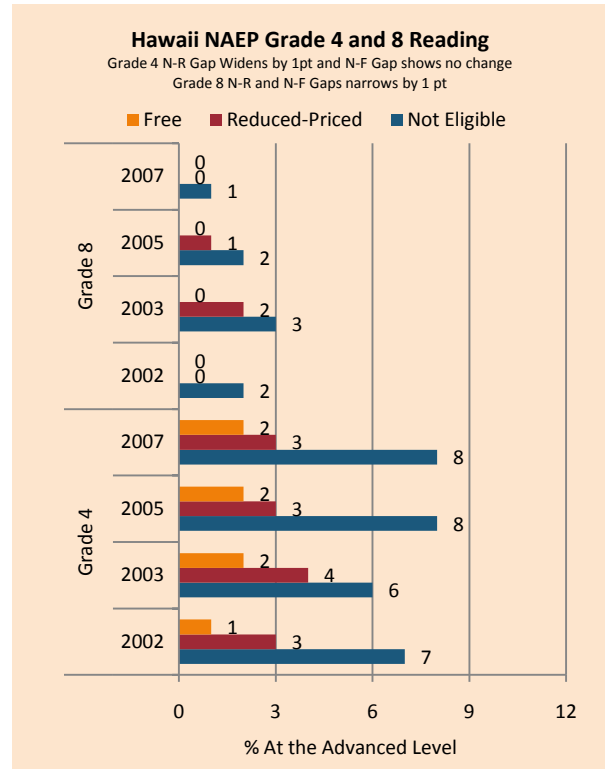
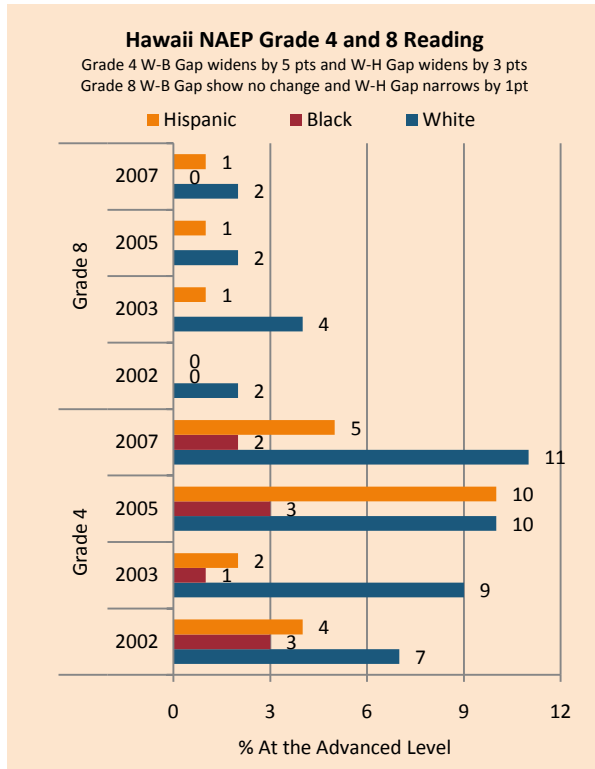
NAEP proficiency level and percentile demonstrate the existence of substantial excellence gaps for Hispanic and Free and Reduced Lunch Eligible students in Math and Reading Grade 4, with narrower gaps in Grade 8 Reading. White students had higher average AP scores than Black and Hispanic students on AP tests and were more likely to make a “5” on an AP exam or take an AP exam.

According to NAEP proficiency data, the percentage of students at the advanced level increased in Grade 4 for all but Hispanic students in Math and FARM students in Reading, with White and non-FARM students improving more rapidly than other students except for Hispanic students in Reading (who narrowed the excellence gap). There was a decline among Hispanic students in Grade 8, while FARM and White students improved in Math but declined in Reading. The excellence gap increased for Hispanic students in Math but narrowed in Reading.

NAEP scale scores at the 90<sup>th</sup> percentile increased across subgroups in Grade 4 in both subjects, as well as for FARM, non-FARM, and White students in Math Grade 8. The excellence gap narrowed in most cases, although these results in Reading Grade 8 were largely due to lower scores among White and non-FARM students. A decline among Hispanic students’ performances led to a wider gap in Math Grade 8.

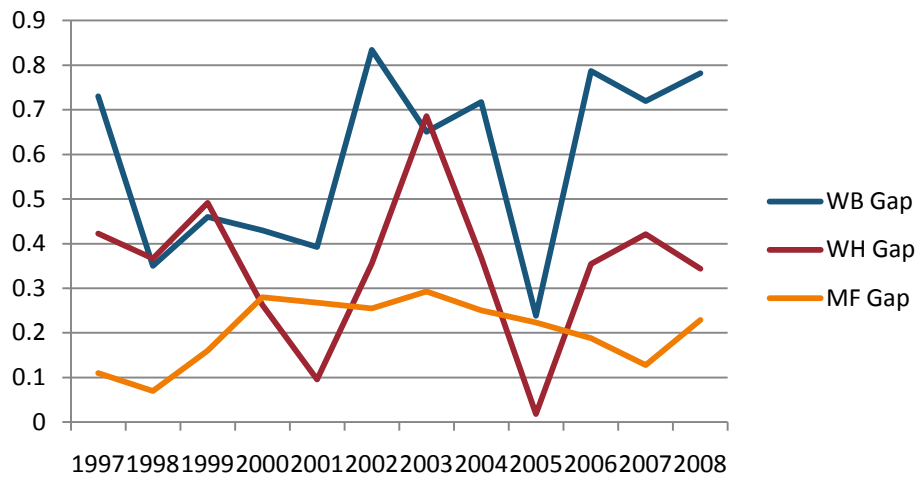
On AP exams, there were modest increases in the gap between Black and White students and there was a modest decrease in the gap between White and Hispanic students in mean AP scores. Meanwhile there was a decrease in the gap between White and Hispanic students in the percentage of tests scoring a 5. For the number of tests taken weighted by enrollment, there was a modest increase in the gap between White and Black students.

Summary of State Policy							
State	Mandate Identify	Mandate Services	Gifted Identified	Identified by Gender	Identified by Ethnicity	GT Funding	GT Funding per Identified
Hawaii	yes	yes	9,538	no	no	\$745,410	\$78.15



NAEP Scores at the 90 <sup>th</sup> Percentile				
Subject, Grade, Group	2003	2007	2003 Gap	2007 Gap
Math 4 Male	265	272	4	1
Math 4 Female	260	271		
Math 8 Male	310	316	2	2
Math 8 Female	309	314		
Reading 4 Male	249	255	9	5
Reading 4 Female	258	260		
Reading 8 Male	293	288	9	12
Reading 8 Female	302	299		
Math 4 ELL	226	253	37	20
Math 4 NonELL	263	272		
Math 8 ELL	277	279	33	37
Math 8 NonELL	311	316		
Reading 4 ELL	212	233	43	26
Reading 4 NonELL	255	259		
Reading 8 ELL	253	258	45	37
Reading 8 NonELL	298	295		
Math 4 FARM	251	260	17	16
Math 4 NonFARM	268	276		
Math 8 FARM	294	304	24	16
Math 8 NonFARM	318	321		
Reading 4 FARM	244	247	17	17
Reading 4 NonFARM	261	263		
Reading 8 FARM	285	286	19	12
Reading 8 NonFARM	304	298		
Math 4 White	275	276		
Math 4 Black	250	253	25	23
Math 4 Hispanic	254	258	21	18
Math 8 White	316	321		
Math 8 Black				
Math 8 Hispanic	309	302	7	18
Reading 4 White	265	269		
Reading 4 Black	246	252	19	18
Reading 4 Hispanic	248	255	17	14
Reading 8 White	309	304		
Reading 8 Black		299		6
Reading 8 Hispanic	297	294	13	10

Gaps in Mean AP Scores



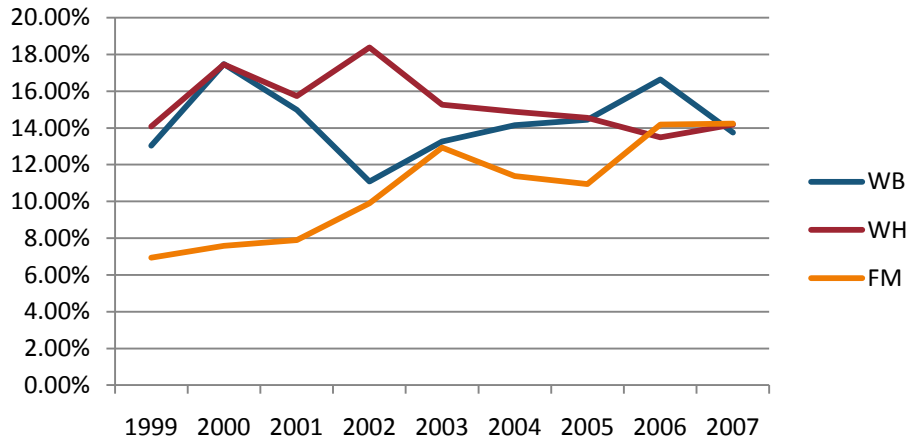
Gaps in the Percentage of Tests Taken Receiving a "5" on the AP Exam by Subgroup\*

	1997	1998	1999	2000	2001	2002	2003	2004	2005	2006	2007	2008
Male	23.03%	23.12%	23.67%	23.33%	23.51%	26.07%	24.46%	23.69%	22.80%	22.81%	21.74%	21.21%
Female	17.27%	16.59%	17.64%	16.69%	14.51%	17.14%	13.95%	15.06%	15.59%	15.35%	16.67%	15.20%
White	22.88%	20.53%	20.16%	19.94%	21.60%	22.83%	20.08%	17.34%	19.77%	20.14%	17.36%	17.86%
Black	9.76%	16.22%	10.00%	16.67%	11.43%	7.58%	10.91%	7.69%	9.23%	5.97%	9.30%	5.71%
Hispanic	10.29%	16.13%	10.77%	15.87%	20.73%	12.24%	9.60%	7.86%	18.71%	9.60%	11.54%	13.53%
M-F Gap	5.76%	6.53%	6.03%	6.63%	9.00%	8.93%	10.51%	8.64%	7.21%	7.47%	5.06%	6.01%
W-B Gap	13.13%	4.31%	10.16%	3.28%	10.18%	15.25%	9.17%	9.65%	10.54%	14.17%	8.06%	12.15%
W-H Gap	12.59%	4.40%	9.39%	4.07%	0.87%	10.58%	10.48%	9.48%	1.06%	10.53%	5.82%	4.33%

Gaps in the Percentage of Tests Taken Receiving a "5" on the AP Exam by Subgroup Weighted by Enrollment\*

	1999	2000	2001	2002	2003	2004	2005	2006	2007
Male	4.35%	4.43%	4.74%	5.79%	5.28%	5.33%	5.59%	5.91%	5.79%
Female	4.47%	4.43%	4.07%	5.50%	4.82%	5.10%	5.53%	6.15%	6.81%
White	4.07%	4.64%	5.12%	6.27%	5.36%	4.82%	5.88%	6.45%	5.77%
Black	0.72%	0.96%	1.00%	1.24%	1.47%	1.05%	1.41%	0.92%	1.81%
Hispanic	0.66%	0.92%	1.65%	1.11%	1.10%	1.01%	2.84%	1.78%	2.20%
M-F Gap	-0.11%	-0.01%	0.67%	0.29%	0.47%	0.23%	0.06%	-0.24%	-1.03%
W-B Gap	3.36%	3.67%	4.12%	5.03%	3.90%	3.77%	4.47%	5.53%	3.96%
W-H Gap	3.41%	3.72%	3.47%	5.16%	4.26%	3.81%	3.04%	4.67%	3.57%

**Gaps in the Number of Tests Taken Weighted by Subgroup Enrollment\***



\*The unit of analysis for AP data is the test, not the student. AP test results are presented as the number of scores received by members of each subgroup, NOT the number of students who received a given score on any exam. These numbers are not equivalent because some students take multiple tests.