

# Georgia

NAEP proficiency level and percentile data as well as results from state assessments demonstrate the existence of substantial excellence gaps for Black, Hispanic, and Free and Reduced Lunch Eligible students. White students had higher average AP scores than Black students on AP tests and were more likely to make a “5” on an AP exam or take an AP exam than Black or Hispanic students.

According to NAEP proficiency data, the percentage of students at the advanced level increased in Math among Blacks in both grades and non-FARM students in Grade 8, while there were improvements in Reading Grade 8 for all but FARM students. The excellence gap narrowed in Reading Grade 4 due to declines among White and non-FARM students, as well as in Math among Black students in both grades, while achievement gaps expanded for FARM students in Grade 4 Math and Grade 8 Reading and Hispanic students in Grade 4 Math.

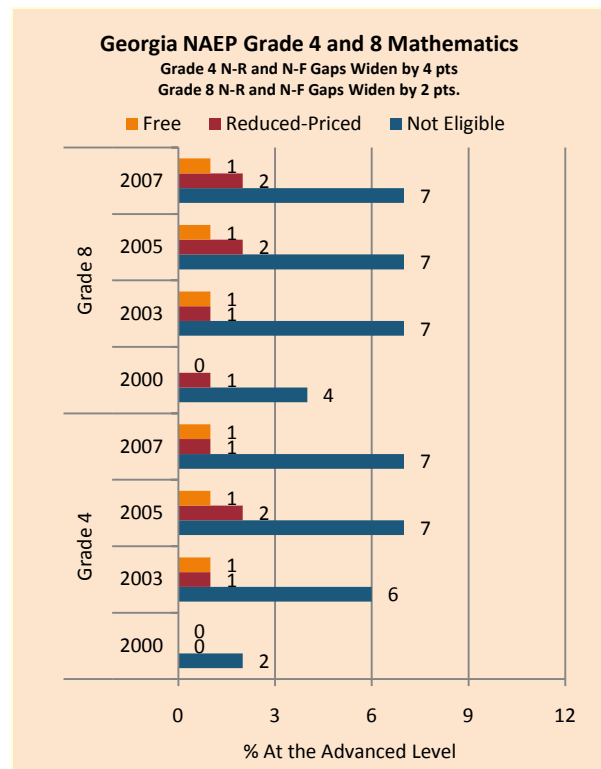
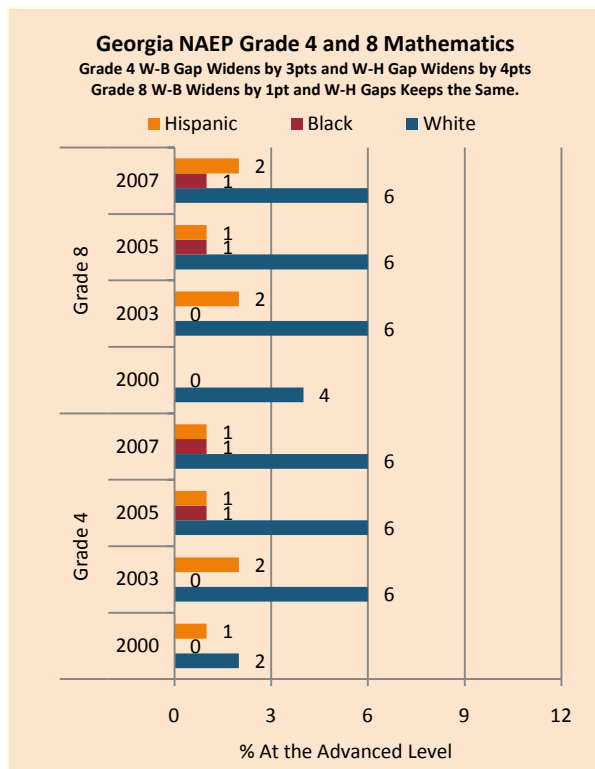
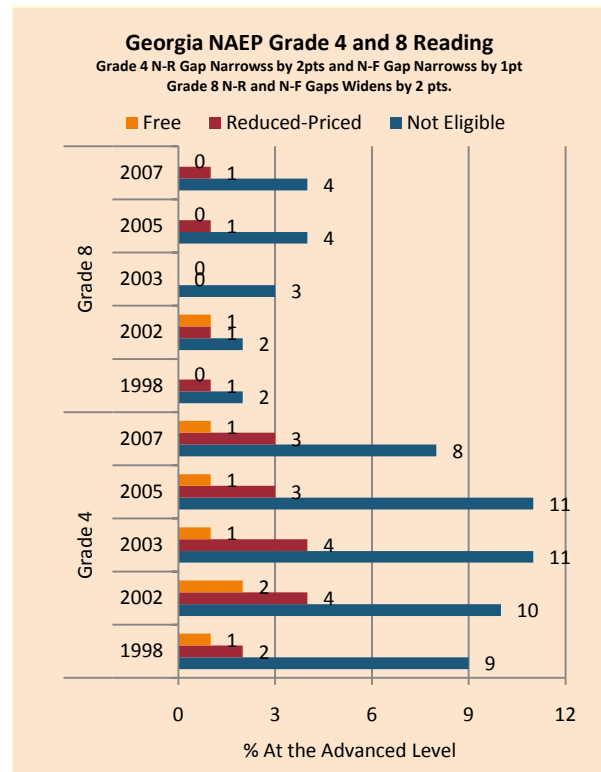
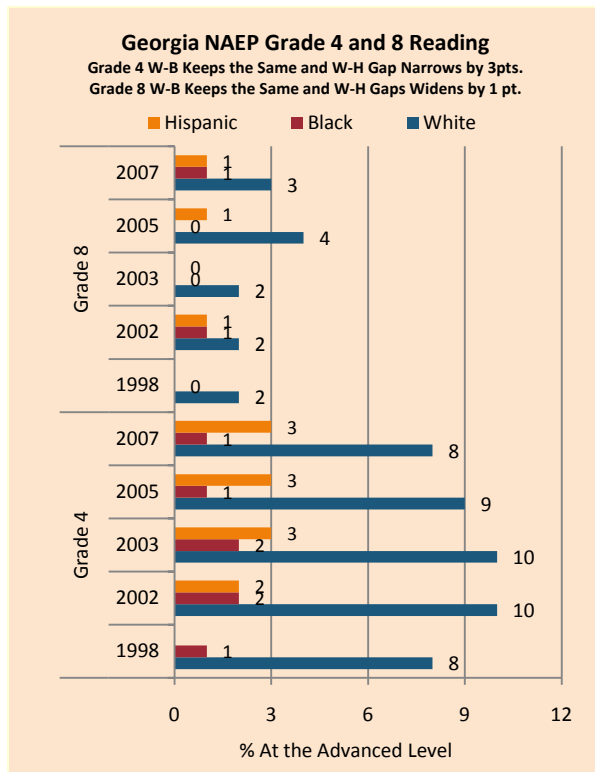
NAEP scale scores at the 90<sup>th</sup> percentile increased in Math in both grades and in Reading Grade 8. FARM and Black students narrowed the achievement gap in Math in both grades, as did Hispanic students in Grade 8. Declines in the excellence gap in Reading Grade 4 were principally due to lower scores by White and non-FARM students.

A large decline in Grade 4 and 7 Reading performances suggests a possible change in testing. If measured since 2006, there has been an increase in the proportion of high-achieving students in Grade 4 and 7 for both Math and Reading for income and ethnic subgroups with a general decline in achievement in Grade 11. Excellence gaps have remained relatively steady, with small increases in Grade 4 and mixed changes in other grades.

There were modest increases in achievement gaps for mean AP scores but a narrowing of achievement gaps as measured by the percentage of tests that received a 5 on the AP exam. The gap in the percentage of tests that received a 5 weighted by subgroup and number of tests taken weighted by enrollment also increased.

### Summary of State Policy as of 2006-2007

State	Mandate Identify	Mandate Services	Gifted Identified	Identified by Gender	Identified by Ethnicity	GT Funding	GT Funding per Identified
Georgia	yes	yes	181,058	no	no	\$197,182,317	\$1,089.06



NAEP Scores at the 90 <sup>th</sup> Percentile				
Subject, Grade, Group	2003	2007	2003 Gap	2007 Gap
Math 4 Male	270	271	6	3
Math 4 Female	264	268		
Math 8 Male	318	321	4	5
Math 8 Female	315	316		
Reading 4 Male	257	255	6	5
Reading 4 Female	263	260		
Reading 8 Male	296	294	6	9
Reading 8 Female	302	303		
Math 4 ELL	245	242	22	28
Math 4 NonELL	267	271		
Math 8 ELL	283	274	34	45
Math 8 NonELL	317	319		
Reading 4 ELL	236	225	24	33
Reading 4 NonELL	260	258		
Reading 8 ELL				
Reading 8 NonELL	300	300		
Math 4 FARM	252	256	23	23
Math 4 NonFARM	276	278		
Math 8 FARM	295	302	31	26
Math 8 NonFARM	326	327		
Reading 4 FARM	243	244	26	21
Reading 4 NonFARM	269	265		
Reading 8 FARM	284	286	22	21
Reading 8 NonFARM	306	307		
Math 4 White	275	280		
Math 4 Black	247	254	28	26
Math 4 Hispanic	266	269	9	11
Math 8 White	325	327		
Math 8 Black	291	301	34	26
Math 8 Hispanic	302	308	22	19
Reading 4 White	268	264		
Reading 4 Black	242	243	26	21
Reading 4 Hispanic	249	251	19	13
Reading 8 White	305	307		
Reading 8 Black	284	285	21	22
Reading 8 Hispanic	289	290	17	17

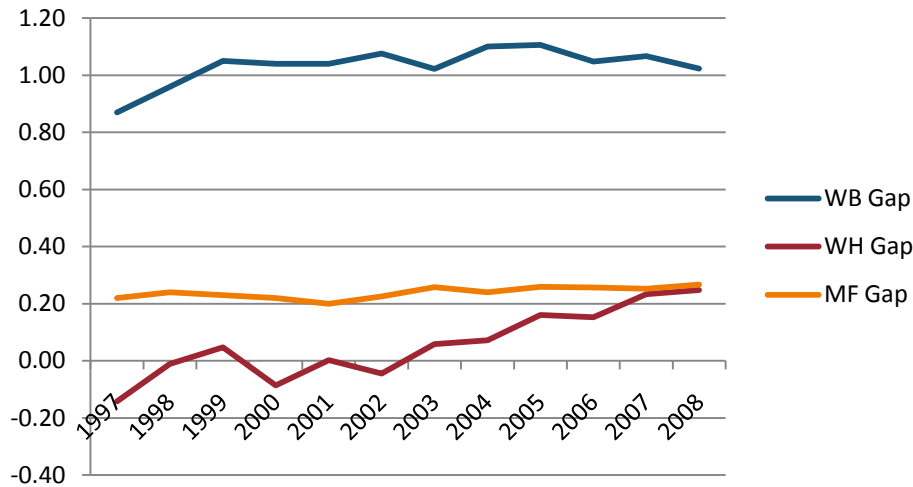
Georgia Criterion Referenced Competency Test Grade 4, 7, 11 English/Language Arts Excellence Achievement Gaps on Race															
% At or Above Advanced Level	Grade 4					Grade 7					Grade 11				
	W	B	H	W-B	W-H	W	B	H	W-B	W-H	W	B	H	W-B	W-H
<b>2005</b>	59	33	33	<b>26</b>	<b>26</b>	60	29	28	<b>31</b>	<b>32</b>	75	51	45	<b>24</b>	<b>30</b>
<b>2006</b>	40	15	14	<b>25</b>	<b>26</b>	19	5	7	<b>14</b>	<b>12</b>	80	56	51	<b>24</b>	<b>29</b>
<b>2007</b>	43	17	17	<b>26</b>	<b>26</b>	25	8	9	<b>17</b>	<b>16</b>	82	61	55	<b>21</b>	<b>27</b>
<b>2008</b>	42	20	19	<b>22</b>	<b>23</b>	20	6	7	<b>14</b>	<b>13</b>	66	39	41	<b>27</b>	<b>25</b>

Georgia Criterion Referenced Competency Test Grade 4, 7, 11 Mathematics Excellence Achievement Gaps on Race															
% At or Above Advanced Level	Grade 4					Grade 7					Grade 11				
	W	B	H	W-B	W-H	W	B	H	W-B	W-H	W	B	H	W-B	W-H
<b>2005</b>	24	8	10	<b>16</b>	<b>14</b>	30	9	12	<b>21</b>	<b>18</b>	65	30	40	<b>35</b>	<b>25</b>
<b>2006</b>	27	10	13	<b>17</b>	<b>14</b>	32	10	14	<b>22</b>	<b>18</b>	68	34	45	<b>34</b>	<b>23</b>
<b>2007</b>	34	17	17	<b>17</b>	<b>17</b>	31	9	14	<b>22</b>	<b>17</b>	67	34	44	<b>33</b>	<b>23</b>
<b>2008</b>	29	10	14	<b>19</b>	<b>15</b>	35	13	20	<b>23</b>	<b>15</b>	65	35	43	<b>30</b>	<b>22</b>

Georgia Criterion Referenced Competency Test Grade 4, 7, 11 English/Language Arts Excellence Achievement Gaps on SES									
% At or Above Advanced Level	Grade 4			Grade 7			Grade 11		
	N	P	Gap	N	P	Gap	N	P	Gap
<b>2005</b>	62	33	<b>29</b>	61	29	<b>32</b>	73	48	<b>25</b>
<b>2006</b>	42	15	<b>27</b>	21	5	<b>16</b>	78	54	<b>24</b>
<b>2007</b>	46	17	<b>29</b>	37	8	<b>29</b>	80	58	<b>22</b>
<b>2008</b>	46	19	<b>27</b>	21	6	<b>15</b>	65	38	<b>27</b>

Georgia Criterion Referenced Competency Test Grade 4, 7, 11 Mathematics Excellence Achievement Gaps on SES									
% At or Above Advanced Level	Grade 4			Grade 7			Grade 11		
	N	P	Gap	N	P	Gap	N	P	Gap
<b>2005</b>	26	8	<b>18</b>	31	10	<b>21</b>	61	31	<b>30</b>
<b>2006</b>	30	11	<b>19</b>	34	11	<b>23</b>	65	37	<b>28</b>
<b>2007</b>	37	14	<b>23</b>	33	10	<b>23</b>	64	36	<b>28</b>
<b>2008</b>	32	11	<b>21</b>	39	14	<b>24</b>	63	36	<b>27</b>

Gaps in Mean AP Scores



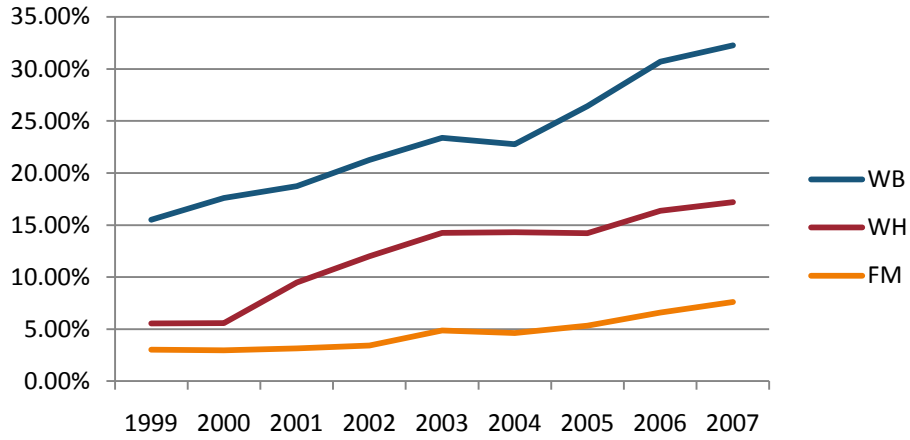
Gaps in the Percentage of Tests Taken Receiving a "5" on the AP Exam by Subgroup\*

	1997	1998	1999	2000	2001	2002	2003	2004	2005	2006	2007	2008
Male	17.94%	16.10%	15.95%	15.15%	14.61%	14.89%	15.22%	16.31%	15.56%	14.70%	14.35%	14.36%
Female	12.59%	10.38%	10.37%	10.55%	9.75%	10.36%	9.87%	10.90%	10.34%	9.57%	9.65%	9.23%
White	15.13%	13.50%	14.04%	13.58%	12.98%	13.38%	12.96%	14.49%	13.71%	12.79%	12.67%	12.73%
Black	4.43%	3.23%	0.29%	3.02%	2.22%	2.97%	3.14%	3.08%	2.74%	2.38%	2.20%	2.42%
Hispanic	19.88%	16.15%	15.47%	17.41%	15.32%	17.67%	17.06%	15.62%	14.69%	14.45%	12.41%	11.38%
M-F Gap	5.35%	5.72%	5.59%	4.60%	4.86%	4.54%	5.35%	5.41%	5.22%	5.13%	4.70%	5.14%
W-B Gap	15.13%	9.07%	10.82%	13.29%	9.96%	11.16%	10.00%	11.35%	10.63%	10.05%	10.28%	10.53%
W-H Gap	-4.74%	-2.65%	-1.43%	-3.83%	-2.34%	-4.29%	-4.10%	-1.13%	-0.98%	-1.66%	0.26%	1.35%

Gaps in the Percentage of Tests Taken Receiving a "5" on the AP Exam by Subgroup Weighted by Enrollment\*

	1999	2000	2001	2002	2003	2004	2005	2006	2007
Male	2.87%	3.00%	3.19%	3.62%	3.79%	4.16%	4.69%	5.09%	5.35%
Female	2.18%	2.40%	2.43%	2.87%	2.94%	3.29%	3.67%	3.95%	4.33%
White	3.16%	3.46%	3.60%	4.16%	4.31%	4.83%	5.35%	5.76%	6.19%
Black	0.02%	0.24%	0.20%	0.29%	0.31%	0.32%	0.34%	0.34%	0.36%
Hispanic	2.62%	3.46%	2.80%	3.37%	3.23%	2.97%	3.64%	4.14%	3.93%
M-F Gap	0.69%	0.60%	0.76%	0.75%	0.85%	0.88%	1.02%	1.15%	1.02%
W-B Gap	3.14%	3.22%	3.40%	3.87%	4.00%	4.50%	5.00%	5.42%	5.83%
W-H Gap	0.54%	0.00%	0.80%	0.79%	1.07%	1.86%	1.71%	1.62%	2.26%

**Gaps in the Number of Tests Taken Weighted by Subgroup Enrollment\***



\*The unit of analysis for AP data is the test, not the student. AP test results are presented as the number of scores received by members of each subgroup, NOT the number of students who received a given score on any exam. These numbers are not equivalent because some students take multiple tests.