

Alaska

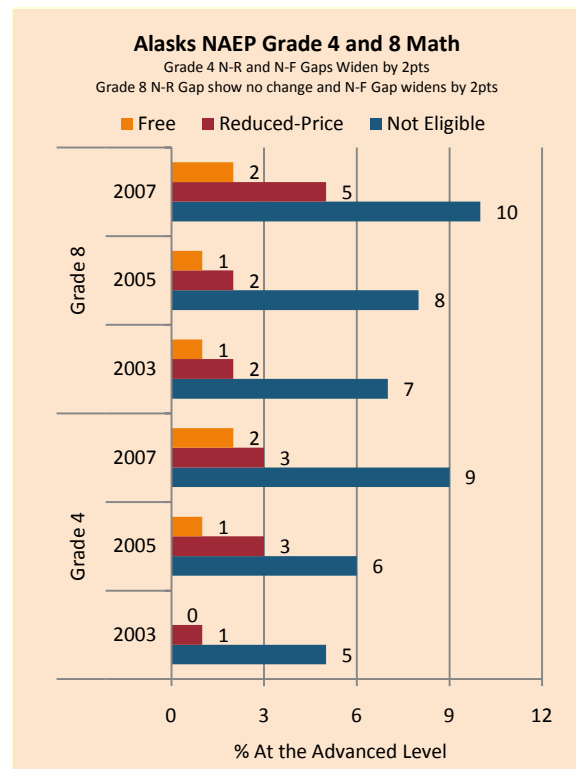
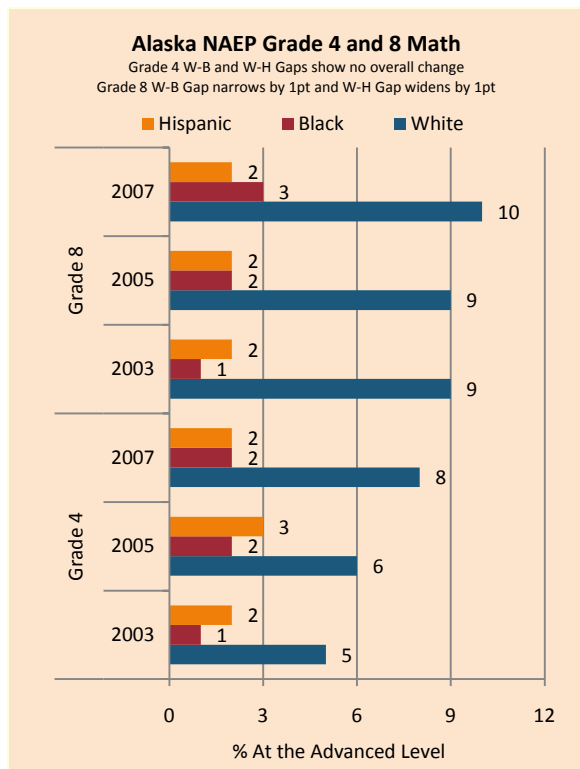
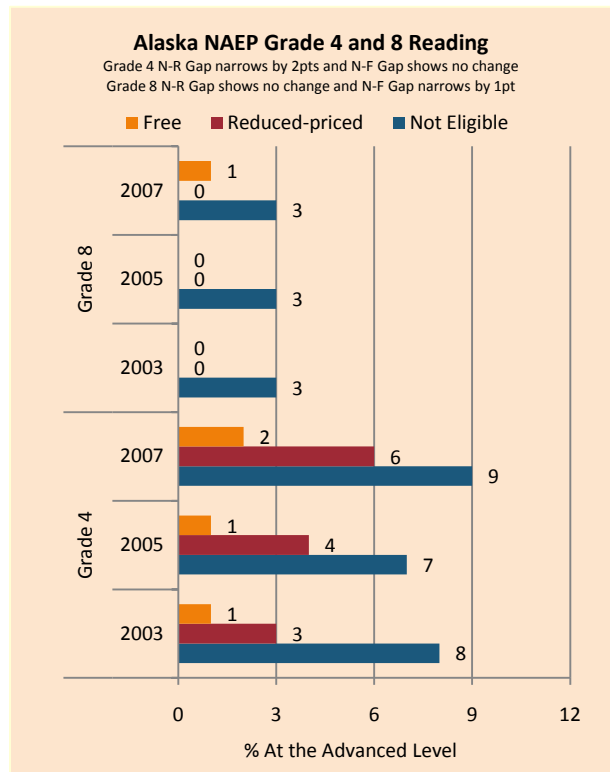
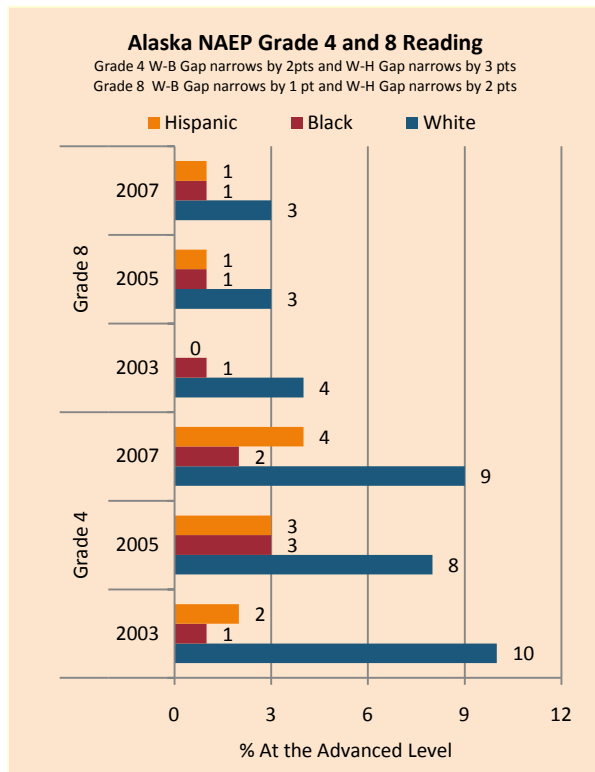
NAEP proficiency level and percentile data as well as results from state assessments demonstrate the existence of substantial excellence gaps for Black, Hispanic, and Free and Reduced Lunch Eligible students. White students had higher average AP scores than Black and Hispanic students on AP tests and were more likely to make a “5” on an AP exam or take an AP exam. Alaska state assessments have a much lower threshold for achieving excellence than most other states or the NAEP.

According to NAEP proficiency data, the excellence gap expanded in Math as White and non-FARM students improved more rapidly than FARM, Black, and Hispanic students. In Reading the achievement gap decreased for Black and Hispanic students in both grades and in Grade 8 for FARM students in part due to a decline among White and non-FARM students.

NAEP scale scores at the 90th percentile increased among most subgroups in Math, leading to a shrinking of the achievement gap for all but Hispanic students in Grade 4. Reading Grade 4 scores were relatively stable, while the excellence gap in Reading Grade 8 narrowed due to non-FARM and White students’ lower scores and improvements among Black and FARM students.

The excellence gap has increased among Black and White students in Grade 4 Math and Reading as the latter have enjoyed greater gains, with a similar pattern holding for low-income students in Grade 4 Math and Reading. However, Hispanic students have outpaced White students to narrow the gap. In Grade 7, the gap has remained steady as income and ethnic subgroups have enjoyed steady gains, while stability is due to stagnation in Grade 10 Math and a decline in performance among ethnic and income subgroups in Grade 10 Reading.

On AP exams, there was an increase in the gap between White and Black students and a decrease in the gap between White and Hispanic students in the percentage of tests taken that received a 5. There was an increase in achievement gaps between White and minority students in the percentage of tests taken receiving a 5 on the exam weighted by enrollment and the number of tests taken weighted by enrollment.



NAEP Scores at the 90 th Percentile				
Subject, Grade, Group	2003	2007	2003 Gap	2007 Gap
Math 4 Male	272	276	5	2
Math 4 Female	266	274		
Math 8 Male	326	328	4	3
Math 8 Female	321	326		
Reading 4 Male	254	257	10	8
Reading 4 Female	264	265		
Reading 8 Male	296	294	11	11
Reading 8 Female	308	305		
Math 4 ELL	251	256	21	21
Math 4 NonELL	272	277		
Math 8 ELL	296	296	30	34
Math 8 NonELL	326	330		
Reading 4 ELL	229	233	34	29
Reading 4 NonELL	263	263		
Reading 8 ELL	274	275	30	28
Reading 8 NonELL	304	303		
Math 4 FARM	254	264	20	17
Math 4 NonFARM	274	280		
Math 8 FARM	304	311	24	21
Math 8 NonFARM	328	332		
Reading 4 FARM	244	245	21	21
Reading 4 NonFARM	265	267		
Reading 8 FARM	284	287	22	18
Reading 8 NonFARM	307	305		
Math 4 White	275	279		
Math 4 Black	254	261	21	18
Math 4 Hispanic	265	263	10	17
Math 8 White	331	334		
Math 8 Black	300	306	31	27
Math 8 Hispanic	303	318	27	16
Reading 4 White	268	267		
Reading 4 Black	251	248	17	18
Reading 4 Hispanic	249	248	19	19
Reading 8 White	309	306		
Reading 8 Black	285	291	24	15
Reading 8 Hispanic	251	256	21	21

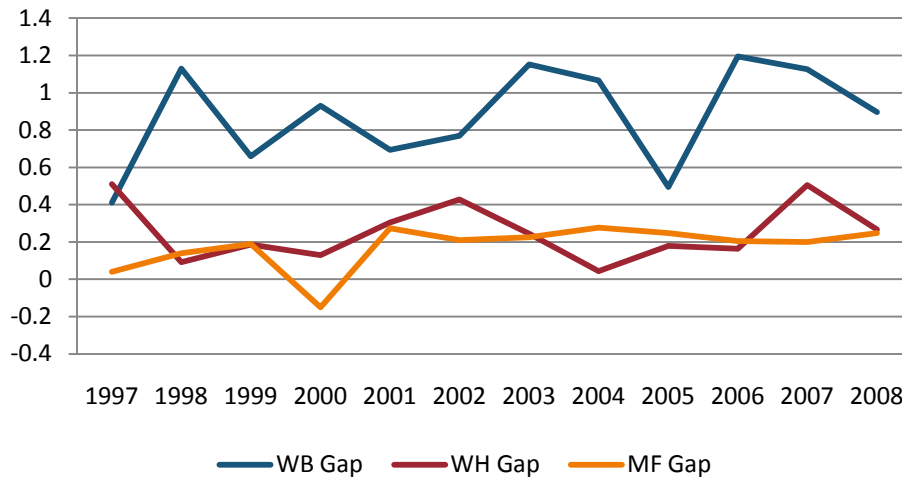
Alaska Standards Based Assessment Grade 4, 7, 9 English/Language Arts Excellence Achievement Gaps on Race															
% At or Above Advanced Level	Grade 4					Grade 7					Grade 10				
	W	B	H	W-B	W-H	W	B	H	W-B	W-H	W	B	H	W-B	W-H
2005	34	15	19	19	15	38	13	18	25	20					
2006	38	18	21	20	17	38	16	19	22	19	41	14	22	27	19
2007	48	25	23	23	25	43	18	25	25	18	51	24	25	27	26
2008	49	24	33	25	16	42	18	24	24	18	39	14	18	25	21

Alaska Standards Based Assessment Grade 4, 7, 9 Mathematics Excellence Achievement Gaps on Race															
% At or Above Advanced Level	Grade 4					Grade 7					Grade 10				
	W	B	H	W-B	W-H	W	B	H	W-B	W-H	W	B	H	W-B	W-H
2005	35	15	15	20	20	31	9	16	22	15					
2006	41	17	27	24	14	30	14	17	16	13	24	5	9	19	15
2007	46	22	25	24	21	36	16	25	20	11	25	8	9	17	16
2008	44	22	32	22	12	37	16	24	21	13	24	5	9	19	15

Alaska Standards Based Assessment Grade 4, 7, 9 English/Language Arts Excellence Achievement Gaps on SES									
% At or Above Advanced Level	Grade 4			Grade 7			Grade 10		
	N	P	Gap	N	P	Gap	N	P	Gap
2005	33	13	20	36	12	24			
2006	38	15	23	36	14	22	37	17	20
2007	47	22	25	42	18	24	35	47	-12
2008	47	22	25	41	18	23	35	14	21

Alaska Standards Based Assessment Grade 4, 7, 9 Mathematics Excellence Achievement Gaps on SES									
% At or Above Advanced Level	Grade 4			Grade 7			Grade 10		
	N	P	Gap	N	P	Gap	N	P	Gap
2005	34	16	18	30	11	19			
2006	42	20	22	31	12	19	23	7	16
2007	46	23	23	37	17	20	16	23	-7
2008	45	21	24	38	17	21	22	8	14

Gaps in Mean AP Scores



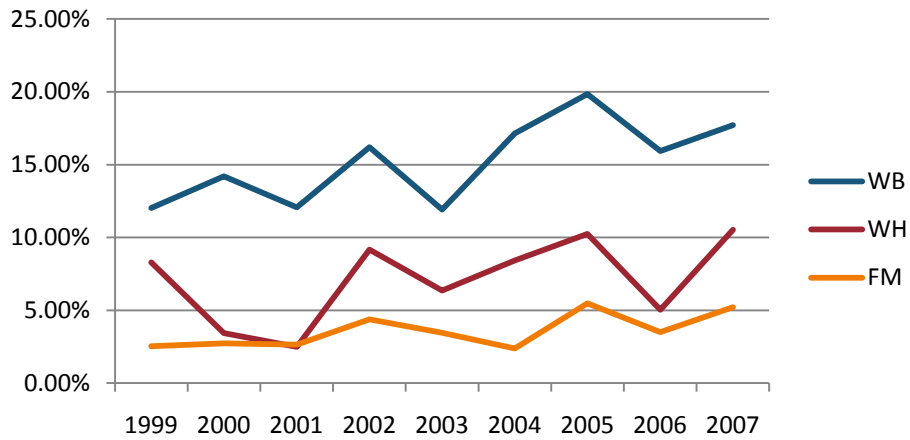
Gaps in the Percentage of Tests Taken Receiving a "5" on the AP Exam by Subgroup*

	1997	1998	1999	2000	2001	2002	2003	2004	2005	2006	2007	2008
Male	10.07%	12.19%	15.01%	7.38%	12.99%	15.97%	12.34%	16.98%	14.55%	14.71%	17.95%	18.68%
Female	9.82%	7.71%	10.10%	11.00%	8.45%	10.57%	8.52%	11.37%	9.62%	10.39%	13.72%	12.33%
White	10.77%	9.69%	13.20%	10.78%	11.70%	14.07%	11.51%	14.88%	12.41%	13.27%	17.55%	16.10%
Black	0.00%	0.00%	4.76%	2.78%	0.00%	5.71%	1.37%	5.13%	2.38%	0.00%	1.45%	1.32%
Hispanic	4.35%	16.95%	6.82%	10.26%	7.32%	8.20%	13.92%	10.71%	7.37%	14.67%	5.88%	12.59%
M-F Gap	0.25%	4.48%	4.91%	-3.62%	4.54%	5.40%	3.82%	5.62%	4.92%	4.32%	4.23%	6.35%
W-B Gap	10.77%	9.69%	8.44%	8.00%	11.70%	8.35%	10.14%	9.75%	10.03%	13.27%	16.10%	14.79%
W-H Gap	6.42%	-7.26%	6.38%	0.52%	4.38%	5.87%	-2.41%	4.16%	5.04%	-1.40%	11.67%	3.51%

Gaps in the Percentage of Tests Taken Receiving a "5" on the AP Exam by Subgroup Weighted by Enrollment*

	1999	2000	2001	2002	2003	2004	2005	2006	2007
Male	2.12%	1.21%	1.93%	2.38%	1.99%	2.91%	2.53%	2.82%	3.21%
Female	1.69%	2.10%	1.48%	2.04%	1.67%	2.22%	2.20%	2.36%	3.17%
White	2.29%	2.10%	2.19%	2.98%	2.44%	3.33%	3.11%	3.41%	4.44%
Black	0.25%	0.15%	0.00%	0.29%	0.13%	0.27%	0.12%	0.00%	0.11%
Hispanic	0.62%	1.65%	1.19%	0.99%	2.07%	1.49%	1.09%	3.03%	0.87%
M-F Gap	0.44%	-0.89%	0.45%	0.34%	0.32%	0.69%	0.33%	0.46%	0.04%
W-B Gap	2.04%	1.96%	2.19%	2.70%	2.32%	3.06%	2.99%	3.41%	4.33%
W-H Gap	1.67%	0.46%	1.00%	2.00%	0.37%	1.83%	2.02%	0.38%	3.57%

Gaps in the Number of Tests Taken Weighted by Subgroup Enrollment*



*The unit of analysis for AP data is the test, not the student. AP test results are presented as the number of scores received by members of each subgroup, NOT the number of students who received a given score on any exam. These numbers are not equivalent because some students take multiple tests.